

SMPD3 Rabbit pAb

Catalog No.: A10197 **4 Publications**

Basic Information

Observed MW

80kDa

Calculated MW

71kDa

Category

Primary antibody

Applications

WB, ELISA

Cross-Reactivity

Human, Mouse, Rat

Background

Predicted to enable phosphatidic acid binding activity; phosphatidylserine binding activity; and sphingomyelin phosphodiesterase activity. Predicted to be involved in positive regulation of exosomal secretion and sphingomyelin metabolic process. Predicted to act upstream of or within several processes, including animal organ development; enzyme linked receptor protein signaling pathway; and sphingolipid metabolic process. Predicted to be located in Golgi apparatus and plasma membrane. Predicted to be active in cytoplasm. Biomarker of pulmonary emphysema.

Recommended Dilutions

WB 1:1000 - 1:3000

ELISA Recommended starting concentration is 1 µg/mL. Please optimize the concentration based on your specific assay requirements.

Immunogen Information

Gene ID

55512

Swiss Prot

Q9NY59

Immunogen

Recombinant protein (or fragment). This information is considered to be commercially sensitive.

Synonyms

NSMASE2; SMPD3

Contact

☎ | 400-999-6126

✉ | cn.market@abclonal.com.cn

🌐 | www.abclonal.com.cn

Product Information

Source

Rabbit

Isotype

IgG

Purification

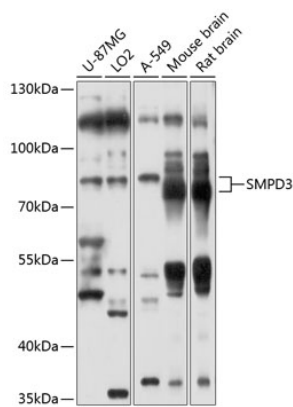
Affinity purification

Storage

Store at -20°C. Avoid freeze / thaw cycles.

Buffer: PBS containing 50% glycerol, preserved with proclin300 or sodium azide (as specified on the Certificate of Analysis), pH 7.3.

Validation Data



Western blot analysis of various lysates using SMPD3 Rabbit pAb (A10197) at 1:1000 dilution. Secondary antibody: HRP-conjugated Goat anti-Rabbit IgG (H+L) (AS014) at 1:10000 dilution. Lysates/proteins: 25µg per lane. Blocking buffer: 3% nonfat dry milk in TBST. Detection: ECL Basic Kit (RM00020). Exposure time: 10s.