

# RBBP8 Rabbit pAb

Catalog No.: A10201 **2 Publications**

## Basic Information

**Observed MW**

110kDa

**Calculated MW**

102kDa

**Category**

Primary antibody

**Applications**

WB, ELISA

**Cross-Reactivity**

Rat

## Background

The protein encoded by this gene is a ubiquitously expressed nuclear protein. It is found among several proteins that bind directly to retinoblastoma protein, which regulates cell proliferation. This protein complexes with transcriptional co-repressor CTBP. It is also associated with BRCA1 and is thought to modulate the functions of BRCA1 in transcriptional regulation, DNA repair, and/or cell cycle checkpoint control. It is suggested that this gene may itself be a tumor suppressor acting in the same pathway as BRCA1. Three transcript variants encoding two different isoforms have been found for this gene. More transcript variants exist, but their full-length natures have not been determined.

## Recommended Dilutions

**WB** 1:500 - 1:1000**ELISA** Recommended starting concentration is 1 µg/mL. Please optimize the concentration based on your specific assay requirements.

## Immunogen Information

**Gene ID**

5932

**Swiss Prot**

Q99708

**Immunogen**

Recombinant protein (or fragment). This information is considered to be commercially sensitive.

**Synonyms**

RIM; COM1; CTIP; JWDS; SAE2; JAWAD; SCKL2; RBBP8

## Contact

 | 400-999-6126 | [cn.market@abclonal.com.cn](mailto:cn.market@abclonal.com.cn) | [www.abclonal.com.cn](http://www.abclonal.com.cn)

## Product Information

**Source**

Rabbit

**Isotype**

IgG

**Purification**

Affinity purification

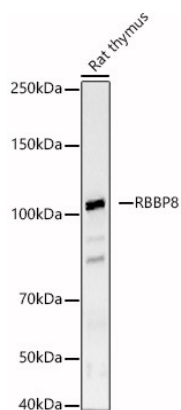
**Storage**

Store at -20°C. Avoid freeze / thaw cycles.

Buffer: PBS with 0.09% Sodium azide, 50% glycerol, pH7.3.

## Validation Data

---



Western blot analysis of lysates from Rat thymus, using RBBP8 Rabbit pAb (A10201) at 1:1000 dilution.  
Secondary antibody: HRP-conjugated Goat anti-Rabbit IgG (H+L) (AS014) at 1:10000 dilution.  
Lysates/proteins: 25µg per lane.  
Blocking buffer: 3% nonfat dry milk in TBST.  
Detection: ECL Basic Kit (RM00020).  
Exposure time: 30s.