

# Cytokeratin 18 (KRT18) Rabbit pAb

Catalog No.: A1022

7 Publications

## Basic Information

### Observed MW

46kDa

### Calculated MW

48kDa

### Category

Primary antibody

### Applications

WB, IHC-P, IF/ICC, ELISA

### Cross-Reactivity

Human, Mouse, Rat

## Background

KRT18 encodes the type I intermediate filament chain keratin 18. Keratin 18, together with its filament partner keratin 8, are perhaps the most commonly found members of the intermediate filament gene family. They are expressed in single layer epithelial tissues of the body. Mutations in this gene have been linked to cryptogenic cirrhosis. Two transcript variants encoding the same protein have been found for this gene.

## Recommended Dilutions

<b>WB</b>	1:1000 - 1:5000
<b>IHC-P</b>	1:50 - 1:100
<b>IF/ICC</b>	1:100 - 1:500
<b>ELISA</b>	Recommended starting concentration is 1 µg/mL. Please optimize the concentration based on your specific assay requirements.

## Immunogen Information

### Gene ID

3875

### Swiss Prot

P05783

### Immunogen

Recombinant protein (or fragment). This information is considered to be commercially sensitive.

### Synonyms

K18; CK-18; CYK18; Cytokeratin 18 (KRT18)

## Contact

☎	400-999-6126
✉	cn.market@abclonal.com.cn
🌐	www.abclonal.com.cn

## Product Information

### Source

Rabbit

### Isotype

IgG

### Purification

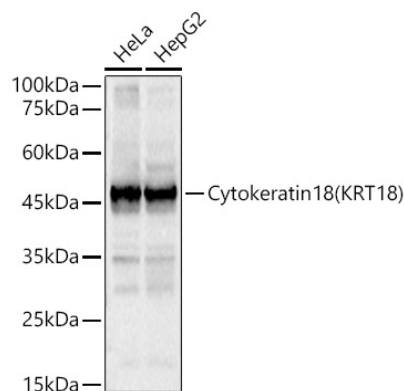
Affinity purification

### Storage

Store at -20°C. Avoid freeze / thaw cycles.

Buffer: PBS with 0.09% Sodium azide, 50% glycerol, pH7.3.

## Validation Data



Western blot analysis of various lysates, using Cytokeratin 18 (KRT18) Rabbit pAb (A1022) at 1:3000 dilution.

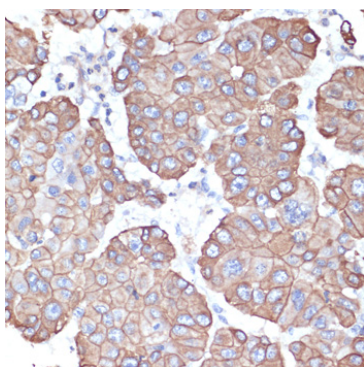
Secondary antibody: HRP-conjugated Goat anti-Rabbit IgG (H+L) (AS014) at 1:10000 dilution.

Lysates/proteins: 25µg per lane.

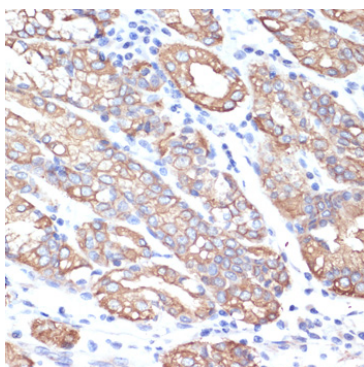
Blocking buffer: 3% nonfat dry milk in TBST.

Detection: ECL Basic Kit (RM00020).

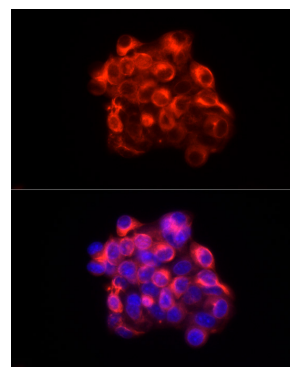
Exposure time: 0.5s.



Immunohistochemistry analysis of paraffin-embedded Human liver cancer using Cytokeratin 18 (KRT18) Rabbit pAb (A1022) at dilution of 1:100 (40x lens). Microwave antigen retrieval performed with 0.01M PBS Buffer (pH 7.2) prior to IHC staining.



Immunohistochemistry analysis of paraffin-embedded Human small intestine using Cytokeratin 18 (KRT18) Rabbit pAb (A1022) at dilution of 1:100 (40x lens). Microwave antigen retrieval performed with 0.01M PBS Buffer (pH 7.2) prior to IHC staining.



Immunofluorescence analysis of HepG2 cells using Cytokeratin 18 (KRT18) Rabbit pAb (A1022) at dilution of 1:300 (40x lens). Secondary antibody: Cy3-conjugated Goat anti-Rabbit IgG (H+L) (AS007) at 1:500 dilution. Blue: DAPI for nuclear staining.