

KCNMB1 Rabbit pAb

Catalog No.: A10224

Basic Information

Observed MW

18kDa

Calculated MW

22kDa

Category

Primary antibody

Applications

ELISA, WB

Cross-Reactivity

Human

Background

MaxiK channels are large conductance, voltage and calcium-sensitive potassium channels which are fundamental to the control of smooth muscle tone and neuronal excitability. MaxiK channels can be formed by 2 subunits: the pore-forming alpha subunit and the product of this gene, the modulatory beta subunit. Intracellular calcium regulates the physical association between the alpha and beta subunits.

Recommended Dilutions

WB 1:200 - 1:2000

Immunogen Information

Gene ID

3779

Swiss Prot

Q16558

Immunogen

Recombinant fusion protein containing a sequence corresponding to amino acids 30-102 of human KCNMB1 (NP_004128.1).

Synonyms

hbeta1; BKbeta1; SLO-BETA; hslo-beta; K(VCA)beta; slo-beta-1; k(VCA)beta-1; KCNMB1

Contact

☎ | 400-999-6126

✉ | cn.market@abclonal.com.cn

🌐 | www.abclonal.com.cn

Product Information

Source

Rabbit

Isotype

IgG

Purification

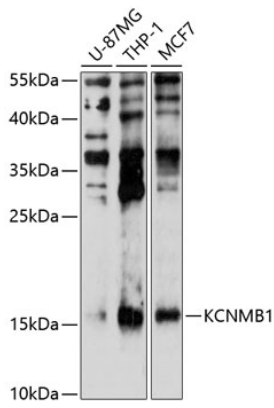
Affinity purification

Storage

Store at -20°C. Avoid freeze / thaw cycles.

Buffer: PBS with 0.02% sodium azide, 50% glycerol, pH 7.3.

Validation Data



Western blot analysis of extracts of various cell lines, using KCNMB1 antibody (A10224) at 1:1000 dilution.
Secondary antibody: HRP Goat Anti-Rabbit IgG (H+L) (AS014) at 1:10000 dilution.
Lysates/proteins: 25µg per lane.
Blocking buffer: 3% nonfat dry milk in TBST.
Detection: ECL Enhanced Kit (RM00021).
Exposure time: 90s.