

eIF2B epsilon (EIF2B5) Rabbit pAb

Catalog No.: A10263 **1 Publications**

Basic Information

Observed MW

85kDa

Calculated MW

80kDa

Category

Primary antibody

Applications

WB,IF/ICC,IP,(ELISA)

Cross-Reactivity

Human, Mouse, Rat

Background

This gene encodes one of five subunits of eukaryotic translation initiation factor 2B (EIF2B), a GTP exchange factor for eukaryotic initiation factor 2 and an essential regulator for protein synthesis. Mutations in this gene and the genes encoding other EIF2B subunits have been associated with leukoencephalopathy with vanishing white matter.

Recommended Dilutions

WB 1:500 - 1:2000

IF/ICC 1:50 - 1:200

IP 0.5µg-4µg antibody for
200µg-400µg extracts of
whole cells

ELISA Recommended starting
concentration is 1 µg/mL.
Please optimize the
concentration based on
your specific assay
requirements.

Immunogen Information

Gene ID

8893

Swiss Prot

Q13144

Immunogen

Recombinant fusion protein containing a sequence corresponding to amino acids 442-721 of human eIF2B epsilon (eIF2B epsilon (EIF2B5)) (NP_003898.2).

Synonyms

CLE; CACH; LVWM; EIF-2B; EIF2Bepsilon; eIF2B epsilon (EIF2B5)

Contact

☎ | 400-999-6126

✉ | cn.market@abclonal.com.cn

🌐 | www.abclonal.com.cn

Product Information

Source

Rabbit

Isotype

IgG

Purification

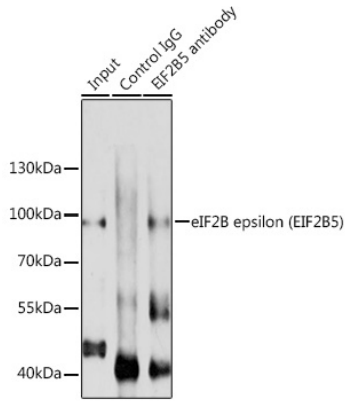
Affinity purification

Storage

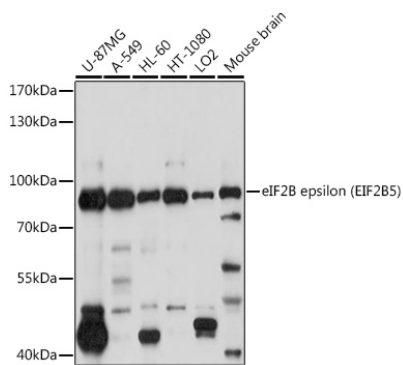
Store at -20°C. Avoid freeze / thaw cycles.

Buffer: PBS with 0.02% sodium azide,50% glycerol,pH7.3.

Validation Data



Immunoprecipitation analysis of 200 µg extracts of A-549 cells using 3 µg eIF2B epsilon (eIF2B epsilon (EIF2B5)) antibody (A10263). Western blot was performed from the immunoprecipitate using eIF2B epsilon (eIF2B epsilon (EIF2B5)) antibody (A10263) at a dilution of 1:1000.



Western blot analysis of various lysates using eIF2B epsilon (EIF2B5) Rabbit pAb (A10263) at 1:1000 dilution.

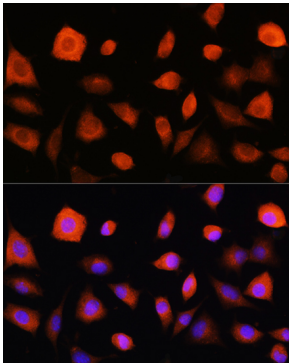
Secondary antibody: HRP-conjugated Goat anti-Rabbit IgG (H+L) (AS014) at 1:10000 dilution.

Lysates/proteins: 25µg per lane.

Blocking buffer: 3% nonfat dry milk in TBST.

Detection: ECL Basic Kit (RM00020).

Exposure time: 10s.



Immunofluorescence analysis of L929 cells using eIF2B epsilon (eIF2B epsilon (EIF2B5)) Rabbit pAb (A10263) at dilution of 1:100. Secondary antibody: Cy3-conjugated Goat anti-Rabbit IgG (H+L) (AS007) at 1:500 dilution. Blue: DAPI for nuclear staining.