

# NRXN3 Rabbit pAb

Catalog No.: A10269

## Basic Information

### Observed MW

140kDa

### Calculated MW

43kDa/47kDa/50kDa/69kDa/117kDa/153kDa/180kDa

### Category

Primary antibody

### Applications

WB, ELISA

### Cross-Reactivity

Human, Mouse, Rat

## Background

This gene encodes a member of a family of proteins that function in the nervous system as receptors and cell adhesion molecules. Extensive alternative splicing and the use of alternative promoters results in multiple transcript variants and protein isoforms for this gene, but the full-length nature of many of these variants has not been determined. Transcripts that initiate from an upstream promoter encode alpha isoforms, which contain epidermal growth factor-like (EGF-like) sequences and laminin G domains. Transcripts initiating from the downstream promoter encode beta isoforms, which lack EGF-like sequences. Genetic variation at this locus has been associated with a range of behavioral phenotypes, including alcohol dependence and autism spectrum disorder.

## Recommended Dilutions

**WB** 1:1000 - 1:2000

**ELISA** Recommended starting concentration is 1 µg/mL. Please optimize the concentration based on your specific assay requirements.

## Immunogen Information

### Gene ID

9369

### Swiss Prot

Q9HDB5/Q9Y4C0

### Immunogen

Recombinant protein (or fragment). This information is considered to be commercially sensitive.

### Synonyms

C14orf60; NRXN3

## Contact

☎ | 400-999-6126

✉ | [cn.market@abclonal.com.cn](mailto:cn.market@abclonal.com.cn)

🌐 | [www.abclonal.com.cn](http://www.abclonal.com.cn)

## Product Information

### Source

Rabbit

### Isotype

IgG

### Purification

Affinity purification

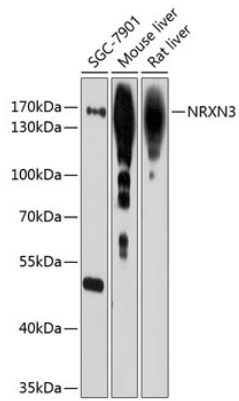
### Storage

Store at -20°C. Avoid freeze / thaw cycles.

Buffer: PBS containing 50% glycerol, preserved with proclin300 or sodium azide (as specified on the Certificate of Analysis), pH 7.3.

## Validation Data

---



Western blot analysis of various lysates using NRXN3 Rabbit pAb (A10269) at 1:1000 dilution.  
Secondary antibody: HRP-conjugated Goat anti-Rabbit IgG (H+L) (AS014) at 1:10000 dilution.  
Lysates/proteins: 25µg per lane.  
Blocking buffer: 3% nonfat dry milk in TBST.  
Detection: ECL Basic Kit (RM00020).  
Exposure time: 90s.