

CYFIP1 Rabbit pAb

Catalog No.: A10291

Basic Information

Observed MW

145kDa

Calculated MW

145kDa

Category

Primary antibody

Applications

WB, IP, ELISA

Cross-Reactivity

Human, Mouse

Background

This gene encodes a protein that regulates cytoskeletal dynamics and protein translation. The encoded protein is a component of the WAVE regulatory complex (WRC), which promotes actin polymerization. This protein also interacts with the synaptic functional regulator FMR1 protein and translation initiation factor 4E to inhibit protein translation. A large chromosomal deletion including this gene is associated with increased risk of schizophrenia and epilepsy in human patients. Reduced expression of this gene has been observed in various human cancers and the encoded protein may inhibit tumor invasion.

Recommended Dilutions

WB 1:1000 - 1:2000**IP** 0.5µg-4µg antibody for
200µg-400µg extracts of
whole cells**ELISA** Recommended starting
concentration is 1 µg/mL.
Please optimize the
concentration based on
your specific assay
requirements.

Immunogen Information

Gene ID

23191

Swiss Prot

Q7L576

Immunogen

Recombinant protein (or fragment). This information is considered to be commercially sensitive.

Synonyms

SHYC; SRA1; SRA-1; P140SRA-1; CYFIP1

Contact

 | 400-999-6126 | cn.market@abclonal.com.cn | www.abclonal.com.cn

Product Information

Source

Rabbit

Isotype

IgG

Purification

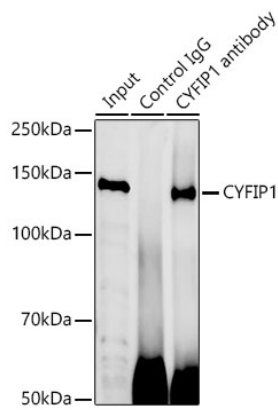
Affinity purification

Storage

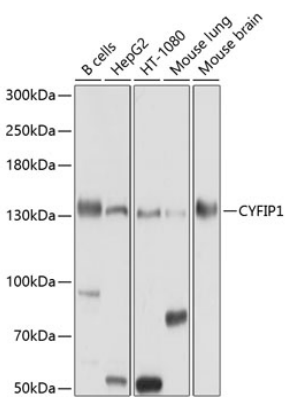
Store at -20°C. Avoid freeze / thaw cycles.

Buffer: PBS containing 50% glycerol, preserved with proclin300 or sodium azide (as specified on the Certificate of Analysis), pH 7.3.

Validation Data



Immunoprecipitation analysis of 300 µg extracts of BT-474 cells using 3 µg CYFIP1 antibody (A10291). Western blot was performed from the immunoprecipitate using CYFIP1 antibody (A10291) at a dilution of 1:500.



Western blot analysis of various lysates using CYFIP1 Rabbit pAb (A10291) at 1:1000 dilution. Secondary antibody: HRP-conjugated Goat anti-Rabbit IgG (H+L) (AS014) at 1:10000 dilution. Lysates/proteins: 25µg per lane. Blocking buffer: 3% nonfat dry milk in TBST. Detection: ECL Basic Kit (RM00020). Exposure time: 10s.