

BICD2 Rabbit pAb

Catalog No.: A10292

Basic Information

Observed MW

118kDa

Calculated MW

94kDa

Category

Primary antibody

Applications

ELISA, WB

Cross-Reactivity

Human, Mouse, Rat

Background

This gene is one of two human homologs of *Drosophila* bicaudal-D and a member of the Bicoid family. It has been implicated in dynein-mediated, minus end-directed motility along microtubules. It has also been reported to be a phosphorylation target of NIMA related kinase 8. Two alternative splice variants have been described.

Recommended Dilutions

WB 1:1000 - 1:2000

Immunogen Information

Gene ID

23299

Swiss Prot

Q8TD16

Immunogen

Recombinant fusion protein containing a sequence corresponding to amino acids 440-620 of human BICD2 (NP_001003800.1).

Synonyms

SMALED2; SMALED2A; SMALED2B; bA526D8.1; BICD2

Contact

☎ | 400-999-6126

✉ | cn.market@abclonal.com.cn

🌐 | www.abclonal.com.cn

Product Information

Source

Rabbit

Isotype

IgG

Purification

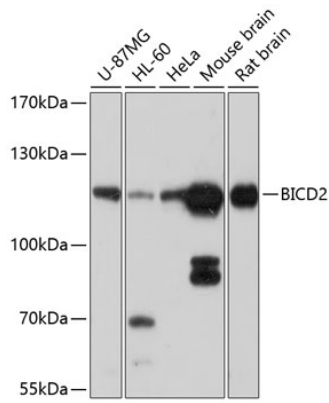
Affinity purification

Storage

Store at -20°C. Avoid freeze / thaw cycles.

Buffer: PBS with 0.02% sodium azide, 50% glycerol, pH7.3.

Validation Data



Western blot analysis of extracts of various cell lines, using BICD2 antibody (A10292) at 1:1000 dilution.
Secondary antibody: HRP Goat Anti-Rabbit IgG (H+L) (AS014) at 1:10000 dilution.
Lysates/proteins: 25µg per lane.
Blocking buffer: 3% nonfat dry milk in TBST.
Detection: ECL Basic Kit (RM00020).
Exposure time: 30s.