

RNF138 Rabbit pAb

Catalog No.: A10304 **2 Publications**

Basic Information

Observed MW

28kDa

Calculated MW

24kDa/28kDa

Category

Primary antibody

Applications

ELISA, WB

Cross-Reactivity

Human

Background

Predicted to enable protein kinase binding activity; single-stranded DNA binding activity; and ubiquitin protein ligase activity. Acts upstream of or within cellular response to leukemia inhibitory factor. Predicted to be located in chromosome. Predicted to be active in site of double-strand break. Is expressed in several structures, including genitourinary system; lung; nervous system; sensory organ; and tooth. Orthologous to human RNF138 (ring finger protein 138).

Recommended Dilutions

WB 1:500 - 1:2000

Immunogen Information

Gene ID

56515

Swiss Prot

Immunogen

Recombinant fusion protein containing a sequence corresponding to amino acids 60-245 of mouse RNF138 (Q9CQE0).

Synonyms

Trif; STRIN; Trif-d; 2410015A17Rik; 2810480D20Rik; RNF138

Contact

 | 400-999-6126

 | cn.market@abclonal.com.cn

 | www.abclonal.com.cn

Product Information

Source

Rabbit

Isotype

IgG

Purification

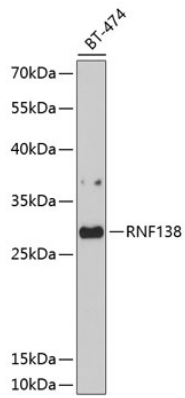
Affinity purification

Storage

Store at -20°C. Avoid freeze / thaw cycles.

Buffer: PBS with 0.02% sodium azide, 50% glycerol, pH7.3.

Validation Data



Western blot analysis of extracts of BT-474 cells, using RNF138 antibody (A10304) at 1:1000 dilution.
Secondary antibody: HRP Goat Anti-Rabbit IgG (H+L) (AS014) at 1:10000 dilution.
Lysates/proteins: 25µg per lane.
Blocking buffer: 3% nonfat dry milk in TBST.
Detection: ECL Basic Kit (RM00020).
Exposure time: 90s.