

# RTCB Rabbit pAb

Catalog No.: A10305

## Basic Information

### Observed MW

55kDa

### Calculated MW

55kDa

### Category

Primary antibody

### Applications

ELISA, WB

### Cross-Reactivity

Human, Mouse, Rat

## Background

Enables RNA ligase (ATP) activity and vinculin binding activity. Involved in tRNA splicing, via endonucleolytic cleavage and ligation. Located in cytosol and nucleoplasm. Part of tRNA-splicing ligase complex.

## Recommended Dilutions

WB 1:500 - 1:2000

## Immunogen Information

### Gene ID

51493

### Swiss Prot

Q9Y3I0

### Immunogen

Recombinant fusion protein containing a sequence corresponding to amino acids 236-505 of human RTCB (NP\_055121.1).

### Synonyms

FAAP; HSPC117; C22orf28; DJ149A16.6; RTCB

## Contact

☎ | 400-999-6126

✉ | [cn.market@abclonal.com.cn](mailto:cn.market@abclonal.com.cn)

🌐 | [www.abclonal.com.cn](http://www.abclonal.com.cn)

## Product Information

### Source

Rabbit

### Isotype

IgG

### Purification

Affinity purification

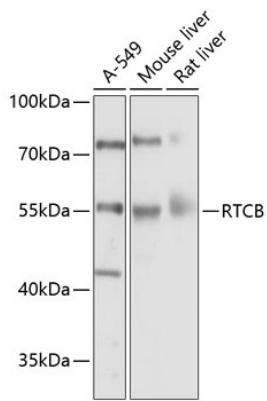
### Storage

Store at -20°C. Avoid freeze / thaw cycles.

Buffer: PBS with 0.02% sodium azide, 50% glycerol, pH 7.3.

## Validation Data

---



Western blot analysis of extracts of various cell lines, using RTCB Antibody (A10305) at 1:1000 dilution.  
Secondary antibody: HRP Goat Anti-Rabbit IgG (H+L) (AS014) at 1:10000 dilution.  
Lysates/proteins: 25µg per lane.  
Blocking buffer: 3% nonfat dry milk in TBST.  
Detection: ECL Basic Kit (RM00020).  
Exposure time: 10s.