

LRRC4 Rabbit pAb

Catalog No.: A10321 **1 Publications**

Basic Information

Observed MW

73kDa

Calculated MW

73kDa

Category

Primary antibody

Applications

WB, ELISA

Cross-Reactivity

Human, Mouse, Rat

Background

Predicted to be involved in modulation of chemical synaptic transmission and synapse organization. Predicted to act upstream of or within synapse organization. Predicted to be located in neuron spine and postsynaptic membrane. Predicted to be active in Schaffer collateral - CA1 synapse; glutamatergic synapse; and plasma membrane. Predicted to be integral component of postsynaptic density membrane.

Recommended Dilutions

WB 1:1000 - 1:2000

ELISA Recommended starting concentration is 1 µg/mL. Please optimize the concentration based on your specific assay requirements.

Immunogen Information

Gene ID

64101

Swiss Prot

Q9HBW1

Immunogen

Recombinant protein (or fragment). This information is considered to be commercially sensitive.

Synonyms

NAG14; NGL-2; LRRC4

Contact

☎ | 400-999-6126

✉ | cn.market@abclonal.com.cn

🌐 | www.abclonal.com.cn

Product Information

Source

Rabbit

Isotype

IgG

Purification

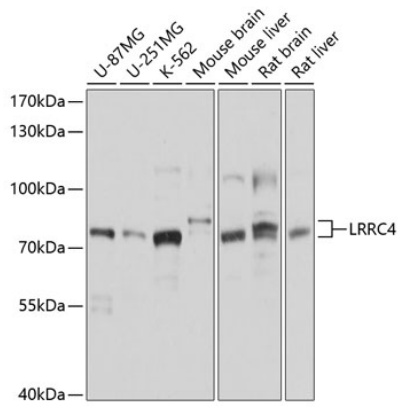
Affinity purification

Storage

Store at -20°C. Avoid freeze / thaw cycles.

Buffer: PBS containing 50% glycerol, preserved with proclin300 or sodium azide (as specified on the Certificate of Analysis), pH 7.3.

Validation Data



Western blot analysis of various lysates using LRRC4 Rabbit pAb (A10321) at 1:1000 dilution. Secondary antibody: HRP-conjugated Goat anti-Rabbit IgG (H+L) (AS014) at 1:10000 dilution. Lysates/proteins: 25µg per lane. Blocking buffer: 3% nonfat dry milk in TBST. Detection: ECL Basic Kit (RM00020). Exposure time: 1s.