

# L3MBTL2 Rabbit pAb

Catalog No.: A10331

## Basic Information

### Observed MW

95kDa

### Calculated MW

79kDa

### Category

Primary antibody

### Applications

ELISA, WB

### Cross-Reactivity

Human

## Background

Enables methylated histone binding activity. Predicted to be involved in negative regulation of transcription, DNA-templated. Predicted to act upstream of or within several processes, including ectoderm development; regulation of histone modification; and stem cell proliferation. Located in nucleus.

## Recommended Dilutions

WB 1:1000 - 1:2000

## Immunogen Information

### Gene ID

83746

### Swiss Prot

Q969R5

### Immunogen

Recombinant fusion protein containing a sequence corresponding to amino acids 486-705 of human L3MBTL2 (NP\_113676.2).

### Synonyms

L3MBT; H-I(3)mbt-I; L3MBTL2

## Contact

☎ | 400-999-6126

✉ | [cn.market@abclonal.com.cn](mailto:cn.market@abclonal.com.cn)

🌐 | [www.abclonal.com.cn](http://www.abclonal.com.cn)

## Product Information

### Source

Rabbit

### Isotype

IgG

### Purification

Affinity purification

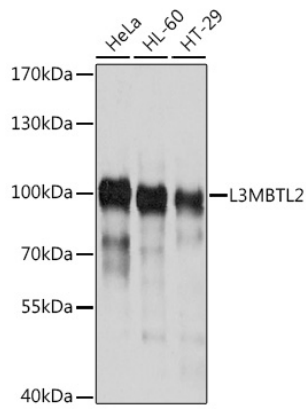
### Storage

Store at -20°C. Avoid freeze / thaw cycles.

Buffer: PBS with 0.02% sodium azide, 50% glycerol, pH7.3.

## Validation Data

---



Western blot analysis of extracts of various cell lines, using L3MBTL2 antibody (A10331) at 1:1000 dilution.

Secondary antibody: HRP Goat Anti-Rabbit IgG (H+L) (AS014) at 1:10000 dilution.

Lysates/proteins: 25µg per lane.

Blocking buffer: 3% nonfat dry milk in TBST.

Detection: ECL Basic Kit (RM00020).

Exposure time: 5s.