

CCDC61 Rabbit pAb

Catalog No.: A10341

Basic Information

Observed MW

57kDa

Calculated MW

57kDa

Category

Primary antibody

Applications

ELISA, WB

Cross-Reactivity

Human

Background

Enables identical protein binding activity and microtubule binding activity. Involved in centriole assembly and mitotic spindle assembly. Located in centriolar satellite and ciliary basal body. Part of centriolar subdistal appendage.

Recommended Dilutions

WB 1:500 - 1:2000

Immunogen Information

Gene ID

729440

Swiss Prot

Q9Y6R9

Immunogen

Recombinant fusion protein containing a sequence corresponding to amino acids 352-531 of human CCDC61 (NP_001073871.1).

Synonyms

VFL3; hVFL3; CCDC61

Contact

☎ | 400-999-6126

✉ | cn.market@abclonal.com.cn

🌐 | www.abclonal.com.cn

Product Information

Source

Rabbit

Isotype

IgG

Purification

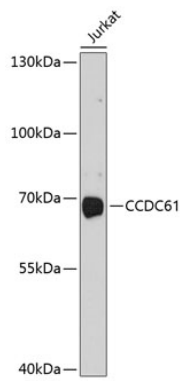
Affinity purification

Storage

Store at -20°C. Avoid freeze / thaw cycles.

Buffer: PBS with 0.02% sodium azide, 50% glycerol, pH 7.3.

Validation Data



Western blot analysis of extracts of Jurkat cells, using CCDC61 antibody (A10341) at 1:1000 dilution.
Secondary antibody: HRP Goat Anti-Rabbit IgG (H+L) (AS014) at 1:10000 dilution.
Lysates/proteins: 25µg per lane.
Blocking buffer: 3% nonfat dry milk in TBST.
Detection: ECL Basic Kit (RM00020).
Exposure time: 90s.