

# DAB1 Rabbit pAb

Catalog No.: A10349 **1 Publications**

## Basic Information

### Observed MW

57kDa/59kDa

### Calculated MW

64kDa

### Category

Primary antibody

### Applications

ELISA, WB, IF/ICC

### Cross-Reactivity

Human, Mouse, Rat

## Background

The laminar organization of multiple neuronal types in the cerebral cortex is required for normal cognitive function. In mice, the disabled-1 gene plays a central role in brain development, directing the migration of cortical neurons past previously formed neurons to reach their proper layer. This gene is similar to disabled-1, and the protein encoded by this gene is thought to be a signal transducer that interacts with protein kinase pathways to regulate neuronal positioning in the developing brain.

## Recommended Dilutions

**WB** 1:100 - 1:500

**IF/ICC** 1:50 - 1:200

## Immunogen Information

### Gene ID

1600

### Swiss Prot

O75553

### Immunogen

Recombinant fusion protein containing a sequence corresponding to amino acids 1-185 of human DAB1 (NP\_066566.3).

### Synonyms

SCA37; DAB1

## Contact

☎ | 400-999-6126

✉ | [cn.market@abclonal.com.cn](mailto:cn.market@abclonal.com.cn)

🌐 | [www.abclonal.com.cn](http://www.abclonal.com.cn)

## Product Information

### Source

Rabbit

### Isotype

IgG

### Purification

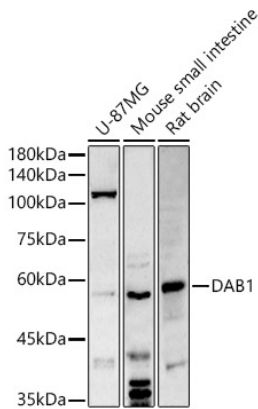
Affinity purification

### Storage

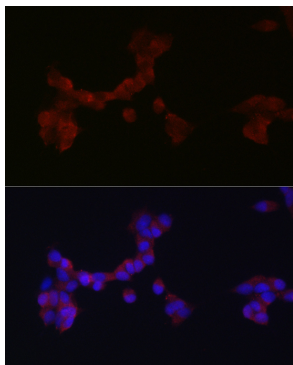
Store at -20°C. Avoid freeze / thaw cycles.

Buffer: PBS with 0.05% proclin300, 50% glycerol, pH7.3.

# Validation Data



Western blot analysis of extracts of various cell lines, using DAB1 antibody (A10349) at 1:500 dilution.  
Secondary antibody: HRP Goat Anti-Rabbit IgG (H+L) (AS014) at 1:10000 dilution.  
Lysates/proteins: 25µg per lane.  
Blocking buffer: 3% nonfat dry milk in TBST.  
Detection: ECL Basic Kit (RM00020).  
Exposure time: 90s.



Immunofluorescence analysis of SH-SY5Y cells using DAB1 Rabbit pAb (A10349) at dilution of 1:200 (40x lens). Blue: DAPI for nuclear staining.