

KLHL42 Rabbit pAb

Catalog No.: A10373

Basic Information

Observed MW

Calculated MW

57kDa

Category

Primary antibody

Applications

ELISA, IHC-P

Cross-Reactivity

Human, Mouse

Background

Contributes to ubiquitin-protein transferase activity. Involved in proteasome-mediated ubiquitin-dependent protein catabolic process; protein polyubiquitination; and regulation of microtubule-based process. Part of Cul3-RING ubiquitin ligase complex.

Recommended Dilutions

IHC-P 1:50 - 1:200

Immunogen Information

Gene ID

57542

Swiss Prot

Q9P2K6

Immunogen

Recombinant fusion protein containing a sequence corresponding to amino acids 206-505 of human KLHL42 (NP_065833.1).

Synonyms

Ctb9; KLHDC5; KLHL42

Contact

☎ | 400-999-6126

✉ | cn.market@abclonal.com.cn

🌐 | www.abclonal.com.cn

Product Information

Source

Rabbit

Isotype

IgG

Purification

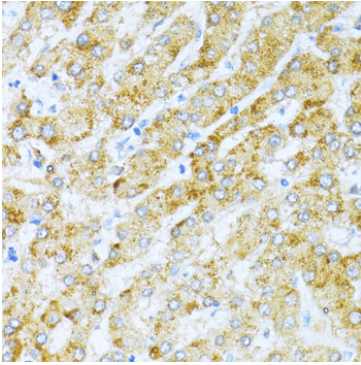
Affinity purification

Storage

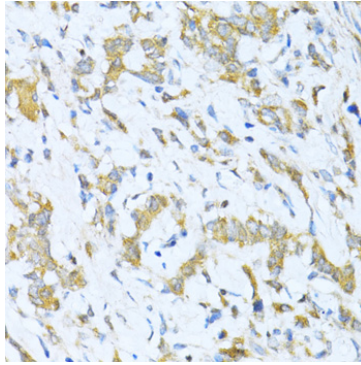
Store at -20°C. Avoid freeze / thaw cycles.

Buffer: PBS with 0.02% sodium azide, 50% glycerol, pH7.3.

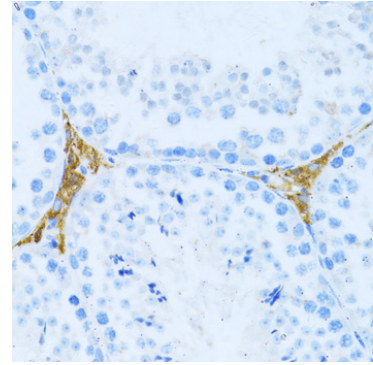
Validation Data



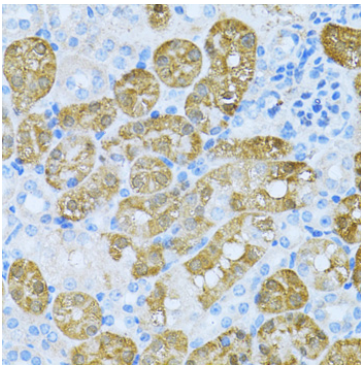
Immunohistochemistry analysis of paraffin-embedded human liver using KLHL42 Rabbit pAb (A10373) at dilution of 1:100 (40x lens). Perform microwave antigen retrieval with 10 mM PBS buffer pH 7.2 before commencing with IHC staining protocol.



Immunohistochemistry analysis of paraffin-embedded human gastric cancer using KLHL42 Rabbit pAb (A10373) at dilution of 1:100 (40x lens). Perform microwave antigen retrieval with 10 mM PBS buffer pH 7.2 before commencing with IHC staining protocol.



Immunohistochemistry analysis of paraffin-embedded mouse testis leydig using KLHL42 Rabbit pAb (A10373) at dilution of 1:100 (40x lens). Perform microwave antigen retrieval with 10 mM PBS buffer pH 7.2 before commencing with IHC staining protocol.



Immunohistochemistry analysis of paraffin-embedded mouse kidney using KLHL42 Rabbit pAb (A10373) at dilution of 1:100 (40x lens). Perform microwave antigen retrieval with 10 mM PBS buffer pH 7.2 before commencing with IHC staining protocol.