

CHMP2A Rabbit pAb

Catalog No.: A10380

Basic Information

Observed MW

37kDa

Calculated MW

25kDa

Category

Primary antibody

Applications

ELISA, WB

Cross-Reactivity

Human

Background

CHMP2A belongs to the chromatin-modifying protein/charged multivesicular body protein (CHMP) family. These proteins are components of ESCRT-III (endosomal sorting complex required for transport III), a complex involved in degradation of surface receptor proteins and formation of endocytic multivesicular bodies (MVBs). Some CHMPs have both nuclear and cytoplasmic/vesicular distributions, and one such CHMP, CHMP1A (MIM 164010), is required for both MVB formation and regulation of cell cycle progression (Tsang et al., 2006 [PubMed 16730941]).

Recommended Dilutions

WB 1:500 - 1:2000

Immunogen Information

Gene ID

27243

Swiss Prot

O43633

Immunogen

Recombinant fusion protein containing a sequence corresponding to amino acids 1-222 of human CHMP2A (NP_055268.1).

Synonyms

BC2; BC-2; VPS2; CHMP2; VPS2A; CHMP2A

Contact

☎ | 400-999-6126

✉ | cn.market@abclonal.com.cn

🌐 | www.abclonal.com.cn

Product Information

Source

Rabbit

Isotype

IgG

Purification

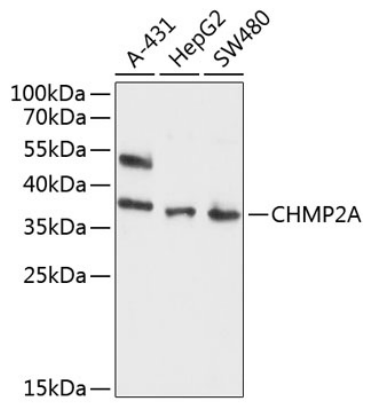
Affinity purification

Storage

Store at -20°C. Avoid freeze / thaw cycles.

Buffer: PBS with 0.02% sodium azide, 50% glycerol, pH 7.3.

Validation Data



Western blot analysis of extracts of various cell lines, using CHMP2A antibody (A10380) at 1:1000 dilution.
Secondary antibody: HRP Goat Anti-Rabbit IgG (H+L) (AS014) at 1:10000 dilution.
Lysates/proteins: 25µg per lane.
Blocking buffer: 3% nonfat dry milk in TBST.
Detection: ECL Enhanced Kit (RM00021).
Exposure time: 90s.