

RBM6 Rabbit pAb

Catalog No.: A10391 **1 Publications**

Basic Information

Observed MW

150kDa

Calculated MW

129kDa

Category

Primary antibody

Applications

ELISA, WB

Cross-Reactivity

Human

Background

Enables RNA binding activity. Predicted to be involved in mRNA splicing, via spliceosome. Predicted to be active in nucleus.

Recommended Dilutions

WB 1:500 - 1:2000

Immunogen Information

Gene ID

10180

Swiss Prot

P78332

Immunogen

Recombinant fusion protein containing a sequence corresponding to amino acids 530-770 of human RBM6 (NP_005768.1).

Synonyms

3G2; g16; DEF3; DEF-3; HLC-11; NY-LU-12; RBM6

Contact

 | 400-999-6126

 | cn.market@abclonal.com.cn

 | www.abclonal.com.cn

Product Information

Source

Rabbit

Isotype

IgG

Purification

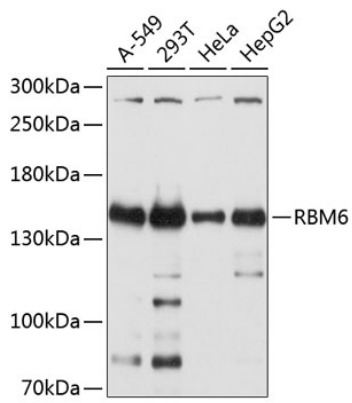
Affinity purification

Storage

Store at -20°C. Avoid freeze / thaw cycles.

Buffer: PBS with 0.02% sodium azide, 50% glycerol, pH7.3.

Validation Data



Western blot analysis of extracts of various cell lines, using RBM6 antibody (A10391) at 1:2000 dilution.
Secondary antibody: HRP Goat Anti-Rabbit IgG (H+L) (AS014) at 1:10000 dilution.
Lysates/proteins: 25µg per lane.
Blocking buffer: 3% nonfat dry milk in TBST.
Detection: ECL Basic Kit (RM00020).
Exposure time: 5s.