

MIEF1 Rabbit pAb

Catalog No.: A10396

Basic Information

Observed MW

51kDa

Calculated MW

51kDa

Category

Primary antibody

Applications

ELISA, WB

Cross-Reactivity

Human, Rat

Background

Enables ADP binding activity; GDP binding activity; and identical protein binding activity. Involved in several processes, including positive regulation of mitochondrial fission; positive regulation of mitochondrial translation; and positive regulation of protein targeting to membrane. Located in mitochondrial matrix and mitochondrial outer membrane. Colocalizes with mitochondrial large ribosomal subunit.

Recommended Dilutions

WB 1:100 - 1:500

Immunogen Information

Gene ID

54471

Swiss Prot

Q9NQG6

Immunogen

Recombinant fusion protein containing a sequence corresponding to amino acids 40-280 of human MIEF1 (NP_061881.2).

Synonyms

MID51; LOR8F8; SMCR7L; AltMIEF1; HSU79252; MIEF1-MP; dj1104E15.3; MIEF1

Contact

☎ | 400-999-6126

✉ | cn.market@abclonal.com.cn

🌐 | www.abclonal.com.cn

Product Information

Source

Rabbit

Isotype

IgG

Purification

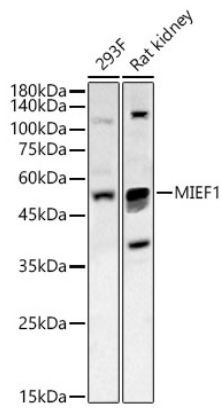
Affinity purification

Storage

Store at -20°C. Avoid freeze / thaw cycles.

Buffer: PBS with 0.02% sodium azide, 50% glycerol, pH7.3.

Validation Data



Western blot analysis of various lysates, using MIEF1 antibody (A10396) at 1:400 dilution.
Secondary antibody: HRP Goat Anti-Rabbit IgG (H+L) (AS014) at 1:10000 dilution.
Lysates/proteins: 25µg per lane.
Blocking buffer: 3% nonfat dry milk in TBST.
Detection: ECL Basic Kit (RM00020).
Exposure time: 60s.