

# STOML2 Rabbit pAb

Catalog No.: A10398

## Basic Information

### Observed MW

40kDa

### Calculated MW

39kDa

### Category

Primary antibody

### Applications

ELISA, WB, IHC-P

### Cross-Reactivity

Human, Mouse, Rat

## Background

Enables GTPase binding activity and cardiolipin binding activity. Involved in several processes, including inorganic cation transmembrane transport; positive regulation of cardiolipin metabolic process; and positive regulation of mitochondrial DNA replication. Located in membrane raft; mitochondrial inner membrane; and mitochondrial intermembrane space. Is extrinsic component of plasma membrane. Colocalizes with several cellular components, including COP9 signalosome; T cell receptor complex; and immunological synapse.

## Recommended Dilutions

WB 1:500 - 1:2000

IHC-P 1:50 - 1:200

## Immunogen Information

### Gene ID

30968

### Swiss Prot

Q9UJZ1

### Immunogen

Recombinant fusion protein containing a sequence corresponding to amino acids 29-356 of human STOML2 (NP\_038470.1).

### Synonyms

SLP-2; HSPC108; STOML2

## Contact

☎ | 400-999-6126

✉ | [cn.market@abclonal.com.cn](mailto:cn.market@abclonal.com.cn)

🌐 | [www.abclonal.com.cn](http://www.abclonal.com.cn)

## Product Information

### Source

Rabbit

### Isotype

IgG

### Purification

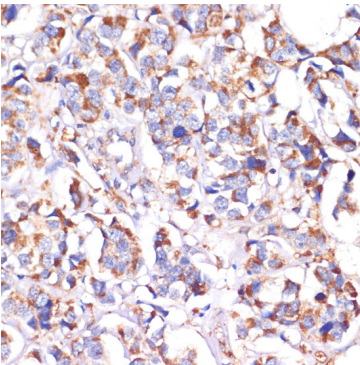
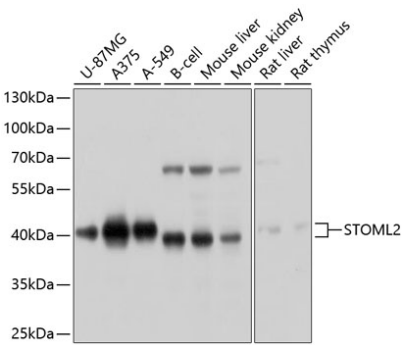
Affinity purification

### Storage

Store at -20°C. Avoid freeze / thaw cycles.

Buffer: PBS with 0.02% sodium azide, 50% glycerol, pH 7.3.

## Validation Data



Immunohistochemistry analysis of paraffin-embedded human breast cancer using STOML2 Rabbit pAb (A10398) at dilution of 1:100 (40x lens). Perform microwave antigen retrieval with 10 mM PBS buffer pH 7.2 before commencing with IHC staining protocol.