

# GNA14 Rabbit pAb

Catalog No.: A10405

## Basic Information

### Observed MW

41kDa

### Calculated MW

42kDa

### Category

Primary antibody

### Applications

ELISA, WB, IF/ICC

### Cross-Reactivity

Human, Mouse, Rat

## Background

This gene encodes a member of the guanine nucleotide-binding, or G protein family. G proteins are heterotrimers consisting of alpha, beta and gamma subunits. The encoded protein is a member of the alpha family of G proteins, more specifically the alpha q subfamily of G proteins. The encoded protein may play a role in pertussis-toxin resistant activation of phospholipase C-beta and its downstream effectors.

## Recommended Dilutions

WB 1:500 - 1:2000

IF/ICC 1:50 - 1:200

## Immunogen Information

### Gene ID

9630

### Swiss Prot

O95837

### Immunogen

Recombinant fusion protein containing a sequence corresponding to amino acids 40-350 of human GNA14 (NP\_004288.1).

### Synonyms

HG1I; GNA14

## Contact

☎ | 400-999-6126

✉ | [cn.market@abclonal.com.cn](mailto:cn.market@abclonal.com.cn)

🌐 | [www.abclonal.com.cn](http://www.abclonal.com.cn)

## Product Information

### Source

Rabbit

### Isotype

IgG

### Purification

Affinity purification

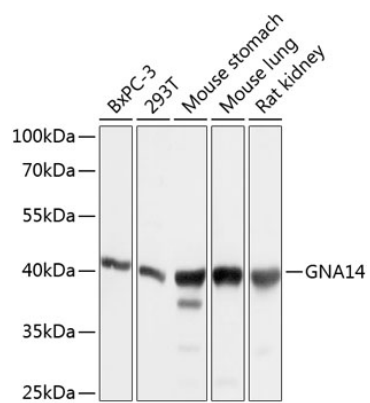
### Storage

Store at -20°C. Avoid freeze / thaw cycles.

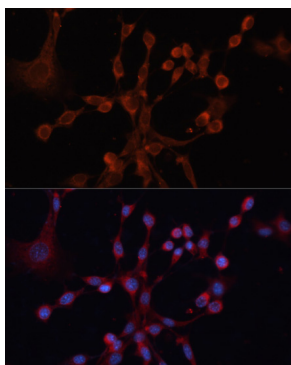
Buffer: PBS with 0.02% sodium azide, 50% glycerol, pH7.3.

## Validation Data

---



Western blot analysis of extracts of various cell lines, using GNA14 antibody (A10405) at 1:1000 dilution.  
Secondary antibody: HRP Goat Anti-Rabbit IgG (H+L) (AS014) at 1:10000 dilution.  
Lysates/proteins: 25µg per lane.  
Blocking buffer: 3% nonfat dry milk in TBST.  
Detection: ECL Basic Kit (RM00020).  
Exposure time: 1s.



Immunofluorescence analysis of NIH/3T3 cells using GNA14 antibody (A10405) at dilution of 1:100. Blue: DAPI for nuclear staining.