

ZIP14 Rabbit pAb

Catalog No.: A10413 **4 Publications**

Basic Information

Observed MW

54kDa

Calculated MW

54kDa

Category

Primary antibody

Applications

WB, IHC-P, IF/ICC, ELISA

Cross-Reactivity

Human, Mouse, Rat

Background

This gene encodes a member of the the SLC39A family of divalent metal transporters that mediates the cellular uptake of manganese, zinc, iron, and cadmium. The encoded protein contains eight transmembrane domains, a histidine-rich motif, and a metalloprotease motif, and is expressed on the plasma membrane and the endocytic vesicle membrane. It is an important transporter of nontransferrin-bound iron and a critical regulator of manganese homeostasis. Naturally occurring mutations in this gene are associated with neurodegeneration with brain iron accumulation and early-onset parkinsonism-dystonia with hypermanganesemia.

Recommended Dilutions

WB 1:500 - 1:1000

IHC-P 1:50 - 1:200

IF/ICC 1:50 - 1:200

ELISA Recommended starting concentration is 1 µg/mL. Please optimize the concentration based on your specific assay requirements.

Immunogen Information

Gene ID

23516

Swiss Prot

Q15043

Immunogen

A synthetic peptide corresponding to a sequence within amino acids 101-200 of human ZIP14 (NP_001121903.1).

Synonyms

HCIN; NET34; ZIP14; cig19; HMNDYT2; LZT-Hs4

Contact

 | 400-999-6126 | cn.market@abclonal.com.cn | www.abclonal.com.cn

Product Information

Source

Rabbit

Isotype

IgG

Purification

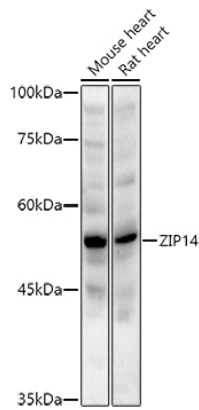
Affinity purification

Storage

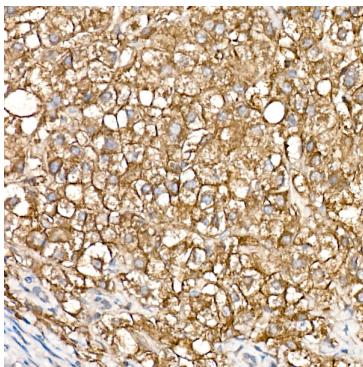
Store at -20°C. Avoid freeze / thaw cycles.

Buffer: PBS with 0.02% sodium azide, 50% glycerol, pH7.3.

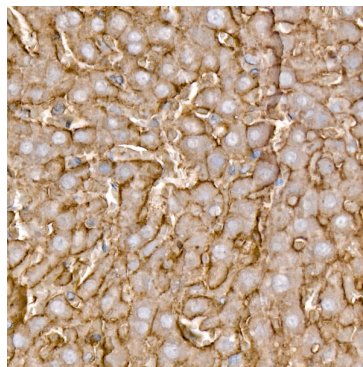
Validation Data



Western blot analysis of various lysates using ZIP14 Rabbit pAb (A10413) at 1:1000 dilution. Secondary antibody: HRP-conjugated Goat anti-Rabbit IgG (H+L) (AS014) at 1:10000 dilution. Lysates/proteins: 25µg per lane. Blocking buffer: 3% nonfat dry milk in TBST. Detection: ECL Enhanced Kit (RM00021). Exposure time: 60s.



Immunohistochemistry analysis of paraffin-embedded Human liver cancer using ZIP14 Rabbit pAb (A10413) at dilution of 1:100 (40x lens). High pressure antigen retrieval performed with 0.01M Citrate Bufferr (pH 6.0) prior to IHC staining.



Immunohistochemistry analysis of paraffin-embedded Rat liver using ZIP14 Rabbit pAb (A10413) at dilution of 1:100 (40x lens). High pressure antigen retrieval performed with 0.01M Citrate Bufferr (pH 6.0) prior to IHC staining.