

SLC44A4 Rabbit pAb

Catalog No.: A10435 **2 Publications**

Basic Information

Observed MW

79kDa

Calculated MW

79kDa

Category

Primary antibody

Applications

ELISA, WB

Cross-Reactivity

Human, Mouse

Background

The protein encoded by this gene may be a sodium-dependent transmembrane transport protein involved in the uptake of choline by cholinergic neurons. Defects in this gene can cause sialidosis, a lysosomal storage disease. Three transcript variants encoding different isoforms have been found for this gene.

Recommended Dilutions

WB 1:500 - 1:2000

Immunogen Information

Gene ID

80736

Swiss Prot

Q53GD3

Immunogen

Recombinant fusion protein containing a sequence corresponding to amino acids 65-215 of human SLC44A4 (NP_079533.2).

Synonyms

CTL4; NG22; TPPT; DFNA72; hTPPT1; C6orf29; SLC44A4

Contact

☎ | 400-999-6126

✉ | cn.market@abclonal.com.cn

🌐 | www.abclonal.com.cn

Product Information

Source

Rabbit

Isotype

IgG

Purification

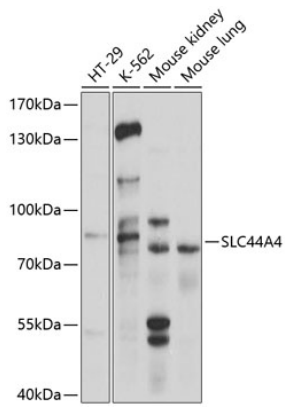
Affinity purification

Storage

Store at -20°C. Avoid freeze / thaw cycles.

Buffer: PBS with 0.02% sodium azide, 50% glycerol, pH 7.3.

Validation Data



Western blot analysis of extracts of various cell lines, using SLC44A4 antibody (A10435) at 1:1000 dilution.

Secondary antibody: HRP Goat Anti-Rabbit IgG (H+L) (AS014) at 1:10000 dilution.

Lysates/proteins: 25µg per lane.

Blocking buffer: 3% nonfat dry milk in TBST.

Detection: ECL Basic Kit (RM00020).

Exposure time: 5s.