

LMAN1 Rabbit pAb

Catalog No.: A10440

Basic Information

Observed MW

55kDa

Calculated MW

54kDa

Category

Primary antibody

Applications

ELISA, WB, IHC-P, IF/ICC

Cross-Reactivity

Human, Mouse, Rat

Background

The protein encoded by this gene is a membrane mannose-specific lectin that cycles between the endoplasmic reticulum, endoplasmic reticulum-Golgi intermediate compartment, and cis-Golgi, functioning as a cargo receptor for glycoprotein transport. The protein has an N-terminal signal sequence, a calcium-dependent and pH-sensitive carbohydrate recognition domain, a stalk region that functions in oligomerization, a transmembrane domain, and a short cytoplasmic domain required for organelle targeting. Allelic variants of this gene are associated with the autosomal recessive disorder combined factor V-factor VIII deficiency.

Recommended Dilutions

WB	1:500 - 1:2000
IHC-P	1:50 - 1:100
IF/ICC	1:50 - 1:200

Immunogen Information

Gene ID

3998

Swiss Prot

P49257

Immunogen

Recombinant fusion protein containing a sequence corresponding to amino acids 270-480 of human LMAN1 (NP_005561.1).

Synonyms

MR60; gp58; F5F8D; FMFD1; MCFD1; ERGIC53; ERGIC-53; LMAN1

Contact

☎ | 400-999-6126

✉ | cn.market@abclonal.com.cn

🌐 | www.abclonal.com.cn

Product Information

Source

Rabbit

Isotype

IgG

Purification

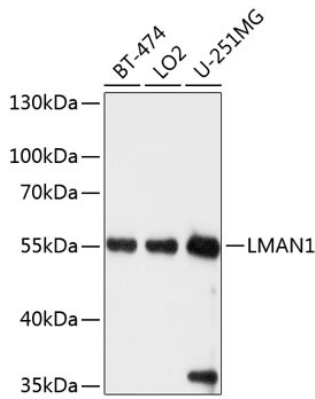
Affinity purification

Storage

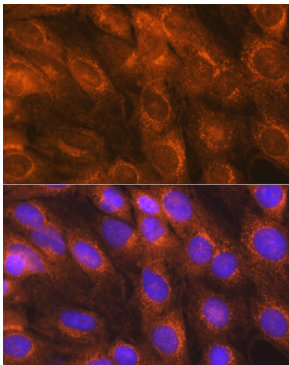
Store at -20°C. Avoid freeze / thaw cycles.

Buffer: PBS with 0.01% thimerosal, 50% glycerol, pH7.3.

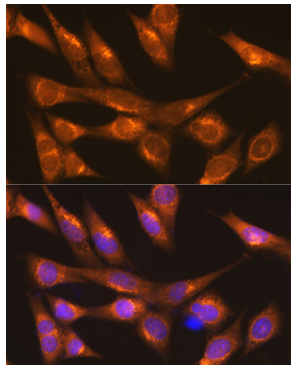
Validation Data



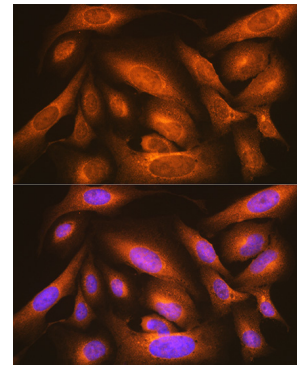
Western blot analysis of various lysates using LMAN1 Rabbit pAb (A10440) at 1:1000 dilution. Secondary antibody: HRP Goat Anti-Rabbit IgG (H+L) (AS014) at 1:10000 dilution. Lysates/proteins: 25µg per lane. Blocking buffer: 3% nonfat dry milk in TBST. Detection: ECL Basic Kit (RM00020). Exposure time: 5s.



Immunofluorescence analysis of C6 cells using LMAN1 Rabbit pAb (A10440) at dilution of 1:100 (40x lens). Secondary antibody: Cy3 Goat Anti-Rabbit IgG (H+L) (AS007) at 1:500 dilution. Blue: DAPI for nuclear staining.



Immunofluorescence analysis of NIH-3T3 cells using LMAN1 Rabbit pAb (A10440) at dilution of 1:100 (40x lens). Secondary antibody: Cy3 Goat Anti-Rabbit IgG (H+L) (AS007) at 1:500 dilution. Blue: DAPI for nuclear staining.



Immunofluorescence analysis of U-2 OS cells using LMAN1 Rabbit pAb (A10440) at dilution of 1:100 (40x lens). Secondary antibody: Cy3 Goat Anti-Rabbit IgG (H+L) (AS007) at 1:500 dilution. Blue: DAPI for nuclear staining.