

PRLHR Rabbit pAb

Catalog No.: A10479

Basic Information

Observed MW

41kDa

Calculated MW

41kDa

Category

Primary antibody

Applications

ELISA, WB

Cross-Reactivity

Human, Mouse

Background

Predicted to enable neuropeptide receptor activity. Predicted to be involved in female pregnancy. Predicted to act upstream of or within G protein-coupled receptor signaling pathway; feeding behavior; and hormone metabolic process. Located in cilium. Implicated in hypertension.

Recommended Dilutions

WB 1:500 - 1:1000

Immunogen Information

Gene ID

2834

Swiss Prot

P49683

Immunogen

Recombinant fusion protein containing a sequence corresponding to amino acids 1-70 of human PRLHR (NP_004239.1).

Synonyms

GR3; GPR10; PrRPR; PRLHR

Contact

 | 400-999-6126

 | cn.market@abclonal.com.cn

 | www.abclonal.com.cn

Product Information

Source

Rabbit

Isotype

IgG

Purification

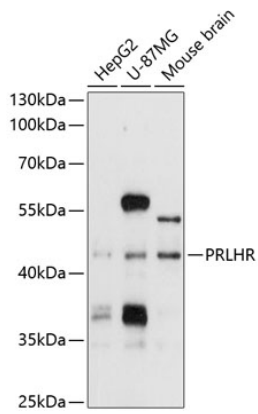
Affinity purification

Storage

Store at -20°C. Avoid freeze / thaw cycles.

Buffer: PBS with 0.02% sodium azide, 50% glycerol, pH7.3.

Validation Data



Western blot analysis of extracts of various cell lines, using PRLHR antibody (A10479) at 1:1000 dilution.
Secondary antibody: HRP Goat Anti-Rabbit IgG (H+L) (AS014) at 1:10000 dilution.
Lysates/proteins: 25µg per lane.
Blocking buffer: 3% nonfat dry milk in TBST.
Detection: ECL Enhanced Kit (RM00021).
Exposure time: 30s.