

# PP2A-B55 $\beta$ /PR55 $\beta$ /PPP2R2B Rabbit pAb

Catalog No.: A10494

## Basic Information

### Observed MW

52kDa

### Calculated MW

52kDa

### Category

Primary antibody

### Applications

ELISA,WB

### Cross-Reactivity

Human, Mouse, Rat

## Background

The product of this gene belongs to the phosphatase 2 regulatory subunit B family. Protein phosphatase 2 is one of the four major Ser/Thr phosphatases, and it is implicated in the negative control of cell growth and division. It consists of a common heteromeric core enzyme, which is composed of a catalytic subunit and a constant regulatory subunit, that associates with a variety of regulatory subunits. The B regulatory subunit might modulate substrate selectivity and catalytic activity. This gene encodes a beta isoform of the regulatory subunit B55 subfamily. Defects in this gene cause autosomal dominant spinocerebellar ataxia 12 (SCA12), a disease caused by degeneration of the cerebellum, sometimes involving the brainstem and spinal cord, and in resulting in poor coordination of speech and body movements. Multiple alternatively spliced variants, which encode different isoforms, have been identified for this gene. The 5' UTR of some of these variants includes a CAG trinucleotide repeat sequence (7-28 copies) that can be expanded to 55-78 copies in cases of SCA12.

## Recommended Dilutions

WB 1:1000 - 1:2000

## Immunogen Information

### Gene ID

5521

### Swiss Prot

Q00005

### Immunogen

Recombinant fusion protein containing a sequence corresponding to amino acids 160-260 of human PP2A-B55 $\beta$ /PR55 $\beta$ /PP2A-B55 $\beta$ /PR55 $\beta$ /PPP2R2B (NP\_858060.2).

### Synonyms

PR52B; SCA12; B55BETA; PR55BETA; PP2ABBETA; PP2APR55B; PR2ABBETA; PR55-BETA; PP2AB55BETA; PR2AB55BETA; PP2APR55BETA; PR2APR55BETA; PP2A-B55 $\beta$ /PR55 $\beta$ /PPP2R2B

## Contact

☎ | 400-999-6126

✉ | [cn.market@abclonal.com.cn](mailto:cn.market@abclonal.com.cn)

🌐 | [www.abclonal.com.cn](http://www.abclonal.com.cn)

## Product Information

### Source

Rabbit

### Isotype

IgG

### Purification

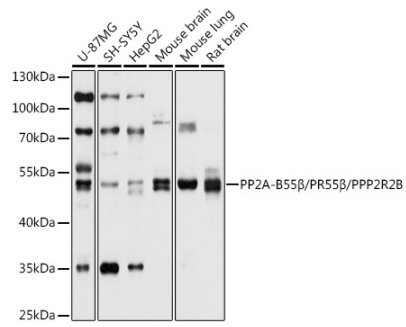
Affinity purification

### Storage

Store at -20°C. Avoid freeze / thaw cycles.

Buffer: PBS with 0.02% sodium azide,50% glycerol,pH7.3.

## Validation Data



Western blot analysis of various lysates using PP2A-B55β/PR55β/PPP2R2B Rabbit pAb (A10494) at 1:1002 dilution.

Secondary antibody: HRP Goat Anti-Rabbit IgG (H+L) (AS014) at 1:10000 dilution.

Lysates/proteins: 25μg per lane.

Blocking buffer: 3% nonfat dry milk in TBST.

Detection: ECL Basic Kit (RM00020).

Exposure time: 5s.