

# ANO1 Rabbit pAb

Catalog No.: A10498 **5 Publications**

## Basic Information

### Observed MW

150kDa

### Calculated MW

114kDa

### Category

Primary antibody

### Applications

ELISA, WB, IF/ICC

### Cross-Reactivity

Human, Mouse

## Background

Enables calcium activated cation channel activity; intracellular calcium activated chloride channel activity; and iodide transmembrane transporter activity. Involved in cation transport; inorganic anion transport; and positive regulation of insulin secretion involved in cellular response to glucose stimulus. Located in apical plasma membrane and nucleoplasm.

## Recommended Dilutions

**WB** 1:1000 - 1:2000

**IF/ICC** 1:100 - 1:200

## Immunogen Information

### Gene ID

55107

### Swiss Prot

Q5XXA6

### Immunogen

Recombinant fusion protein containing a sequence corresponding to amino acids 400-500 of human ANO1 (NP\_060513.5).

### Synonyms

DOG1; INDMS; TAOS2; ORAOV2; TMEM16A; ANO1

## Contact

☎ | 400-999-6126

✉ | [cn.market@abclonal.com.cn](mailto:cn.market@abclonal.com.cn)

🌐 | [www.abclonal.com.cn](http://www.abclonal.com.cn)

## Product Information

### Source

Rabbit

### Isotype

IgG

### Purification

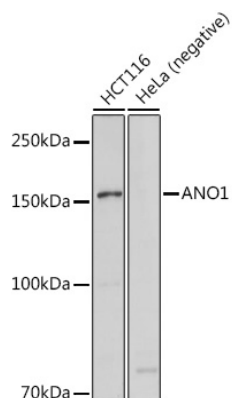
Affinity purification

### Storage

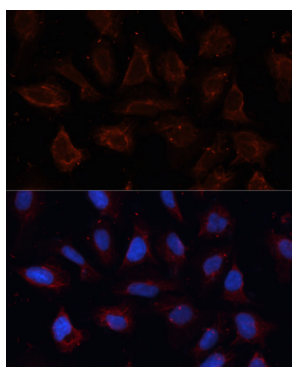
Store at -20°C. Avoid freeze / thaw cycles.

Buffer: PBS with 0.05% proclin300, 50% glycerol, pH7.3.

## Validation Data



Western blot analysis of various lysates using ANO1 Rabbit pAb (A10498) at 1:1000 dilution.  
Secondary antibody: HRP Goat Anti-Rabbit IgG (H+L) (AS014) at 1:10000 dilution.  
Lysates/proteins: 25µg per lane.  
Blocking buffer: 3% nonfat dry milk in TBST.  
Detection: ECL Basic Kit (RM00020).  
Exposure time: 1s.



Immunofluorescence analysis of U2OS cells using ANO1 Rabbit pAb (A10498) at dilution of 1:100. Secondary antibody: Cy3 Goat Anti-Rabbit IgG (H+L) (AS007) at 1:500 dilution. Blue: DAPI for nuclear staining.