

CSF2RB Rabbit pAb

Catalog No.: A10501

Basic Information

Observed MW

95-120kDa

Calculated MW

97kDa

Category

Primary antibody

Applications

ELISA, WB

Cross-Reactivity

Human, Mouse

Background

The protein encoded by this gene is the common beta chain of the high affinity receptor for IL-3, IL-5 and CSF. Defects in this gene have been reported to be associated with protein alveolar proteinosis (PAP).

Recommended Dilutions

WB 1:500 - 1:1000

Immunogen Information

Gene ID

1439

Swiss Prot

P32927

Immunogen

Recombinant fusion protein containing a sequence corresponding to amino acids 200-443 of human CSF2RB (NP_000386.1).

Synonyms

CD131; IL3RB; IL5RB; SMDP5; CDw131; betaGMR; CSF2RB

Contact

☎ | 400-999-6126

✉ | cn.market@abclonal.com.cn

🌐 | www.abclonal.com.cn

Product Information

Source

Rabbit

Isotype

IgG

Purification

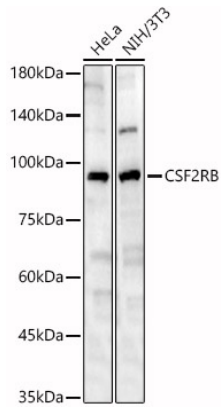
Affinity purification

Storage

Store at -20°C. Avoid freeze / thaw cycles.

Buffer: PBS with 0.02% sodium azide, 50% glycerol, pH7.3.

Validation Data



Western blot analysis of various lysates, using CSF2RB Rabbit pAb (A10501) at 1:1000 dilution.
Secondary antibody: HRP Goat Anti-Rabbit IgG (H+L) (AS014) at 1:10000 dilution.
Lysates/proteins: 25 μ g per lane.
Blocking buffer: 3% nonfat dry milk in TBST.
Detection: ECL Enhanced Kit (RM00021).
Exposure time: 30s.