

KREMEN1 Rabbit pAb

Catalog No.: A10507

Basic Information

Observed MW

70kDa

Calculated MW

52kDa

Category

Primary antibody

Applications

ELISA, WB

Cross-Reactivity

Human, Mouse, Rat

Background

This gene encodes a high-affinity dickkopf homolog 1 (DKK1) transmembrane receptor that functionally cooperates with DKK1 to block wingless (WNT)/beta-catenin signaling. The encoded protein is a component of a membrane complex that modulates canonical WNT signaling through lipoprotein receptor-related protein 6 (LRP6). It contains extracellular kringle, WSC, and CUB domains. Mutations in this gene result in ectodermal dysplasia. This protein has also been found to be a functional receptor for Coxsackievirus A10 and may be an alternative entry receptor for SARS-CoV-2.

Recommended Dilutions

WB 1:500 - 1:2000

Immunogen Information

Gene ID

83999

Swiss Prot

Q96MU8

Immunogen

Recombinant fusion protein containing a sequence corresponding to amino acids 180-380 of human KREMEN1 (NP_001034659.2).

Synonyms

KRM1; ECTD13; KREMEN; KREMEN1

Contact

☎ | 400-999-6126

✉ | cn.market@abclonal.com.cn

🌐 | www.abclonal.com.cn

Product Information

Source

Rabbit

Isotype

IgG

Purification

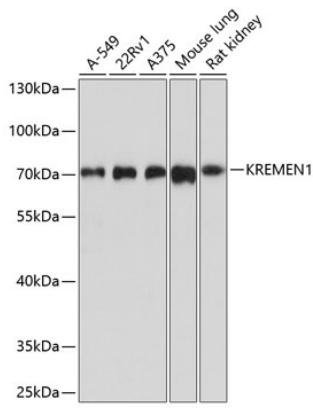
Affinity purification

Storage

Store at -20°C. Avoid freeze / thaw cycles.

Buffer: PBS with 0.02% sodium azide, 50% glycerol, pH7.3.

Validation Data



Western blot analysis of extracts of various cell lines, using KREMEN1 antibody (A10507) at 1:1000 dilution.

Secondary antibody: HRP Goat Anti-Rabbit IgG (H+L) (AS014) at 1:10000 dilution.

Lysates/proteins: 25µg per lane.

Blocking buffer: 3% nonfat dry milk in TBST.

Detection: ECL Basic Kit (RM00020).

Exposure time: 90s.