

PCDH17 Rabbit pAb

Catalog No.: A10512 **2 Publications**

Basic Information

Observed MW

150kDa

Calculated MW

126kDa

Category

Primary antibody

Applications

ELISA, WB

Cross-Reactivity

Human

Background

This gene belongs to the protocadherin gene family, a subfamily of the cadherin superfamily. The encoded protein contains six extracellular cadherin domains, a transmembrane domain, and a cytoplasmic tail differing from those of the classical cadherins. The encoded protein may play a role in the establishment and function of specific cell-cell connections in the brain.

Recommended Dilutions

WB 1:500 - 1:1000

Immunogen Information

Gene ID

27253

Swiss Prot

O14917

Immunogen

Recombinant fusion protein containing a sequence corresponding to amino acids 610-710 of human PCDH17 (NP_001035519.1).

Synonyms

PCH68; PCDH68; PCDH17

Contact

 | 400-999-6126

 | cn.market@abclonal.com.cn

 | www.abclonal.com.cn

Product Information

Source

Rabbit

Isotype

IgG

Purification

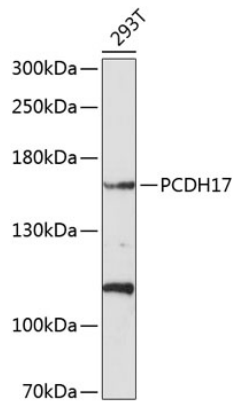
Affinity purification

Storage

Store at -20°C. Avoid freeze / thaw cycles.

Buffer: PBS with 0.02% sodium azide, 50% glycerol, pH7.3.

Validation Data



Western blot analysis of lysates from 293T cells, using PCDH17 Rabbit pAb (A10512) at 1:1000 dilution.
Secondary antibody: HRP Goat Anti-Rabbit IgG (H+L) (AS014) at 1:10000 dilution.
Lysates/proteins: 25µg per lane.
Blocking buffer: 3% nonfat dry milk in TBST.
Detection: ECL Enhanced Kit (RM00021).
Exposure time: 60s.