

LGR5/GPR49 Rabbit pAb

Catalog No.: A10545 **11 Publications**

Basic Information

Observed MW

100kDa

Calculated MW

100kDa

Category

Primary antibody

Applications

WB,IHC-P,ELISA

Cross-Reactivity

Mouse, Rat

Background

The protein encoded by this gene is a leucine-rich repeat-containing receptor (LGR) and member of the G protein-coupled, 7-transmembrane receptor (GPCR) superfamily. The encoded protein is a receptor for R-spondins and is involved in the canonical Wnt signaling pathway. This protein plays a role in the formation and maintenance of adult intestinal stem cells during postembryonic development. Several transcript variants encoding different isoforms have been found for this gene.

Recommended Dilutions

WB 1:1000 - 1:5000

IHC-P 1:100 - 1:500

ELISA Recommended starting concentration is 1 µg/mL. Please optimize the concentration based on your specific assay requirements.

Immunogen Information

Gene ID

8549

Swiss Prot

O75473

Immunogen

Recombinant fusion protein containing a sequence corresponding to amino acids 824-907 of human LGR5/GPR49 (NP_003658.1).

Synonyms

FEX; HG38; GPR49; GPR67; GRP49; LGR5/GPR49

Contact

 | 400-999-6126

 | cn.market@abclonal.com.cn

 | www.abclonal.com.cn

Product Information

Source

Rabbit

Isotype

IgG

Purification

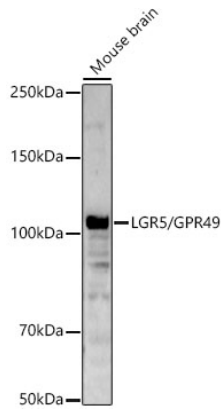
Affinity purification

Storage

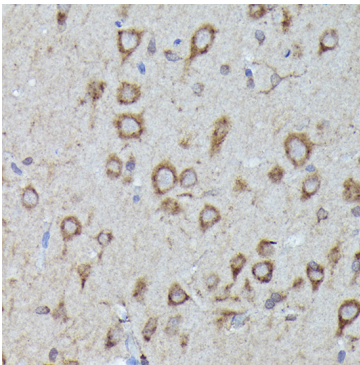
Store at -20°C. Avoid freeze / thaw cycles.

Buffer: PBS with 0.09% Sodium azide,50% glycerol,pH7.3.

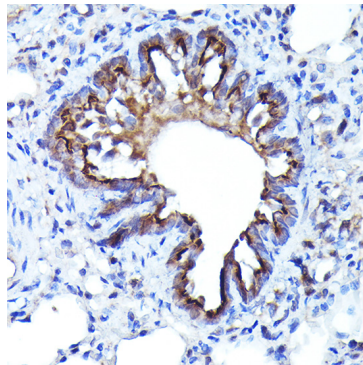
Validation Data



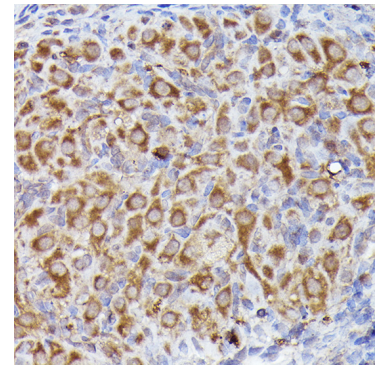
Western blot analysis of lysates from Mouse brain using LGR5/GPR49 Rabbit pAb (A10545) at 1:2000 dilution.
Secondary antibody: HRP-conjugated Goat anti-Rabbit IgG (H+L) (AS014) at 1:10000 dilution.
Lysates/proteins: 25 µg per lane.
Blocking buffer: 3% nonfat dry milk in TBST.
Detection: ECL Basic Kit (RM00020).
Exposure time: 60s.



Immunohistochemistry analysis of paraffin-embedded Rat brain using LGR5/GPR49 Rabbit pAb (A10545) at dilution of 1:300 (40x lens). High pressure antigen retrieval performed with 0.01M Citrate Bufferr (pH 6.0) prior to IHC staining.



Immunohistochemistry analysis of paraffin-embedded Rat lung using LGR5/GPR49 Rabbit pAb (A10545) at dilution of 1:300 (40x lens). High pressure antigen retrieval performed with 0.01M Citrate Bufferr (pH 6.0) prior to IHC staining.



Immunohistochemistry analysis of paraffin-embedded Rat ovary using LGR5/GPR49 Rabbit pAb (A10545) at dilution of 1:300 (40x lens). High pressure antigen retrieval performed with 0.01M Citrate Bufferr (pH 6.0) prior to IHC staining.