

GIPC1 Rabbit pAb

Catalog No.: A10550

Basic Information

Observed MW

40kDa

Calculated MW

36kDa

Category

Primary antibody

Applications

ELISA, WB

Cross-Reactivity

Human, Mouse, Rat

Background

GIPC1 is a scaffolding protein that regulates cell surface receptor expression and trafficking (Lee et al., 2008 [PubMed 18775991]).

Recommended Dilutions

WB 1:1000 - 1:2000

Immunogen Information

Gene ID

10755

Swiss Prot

O14908

Immunogen

Recombinant fusion protein containing a sequence corresponding to amino acids 1-333 of human GIPC1 (NP_005707.1).

Synonyms

NIP; GIPC; IIP-1; OPDM2; TIP-2; SEMCAP; C19orf3; Hs.6454; GLUT1CBP; RGS19IP1; SYNECTIN; SYNECTIN; GIPC1

Contact

☎ | 400-999-6126

✉ | cn.market@abclonal.com.cn

🌐 | www.abclonal.com.cn

Product Information

Source

Rabbit

Isotype

IgG

Purification

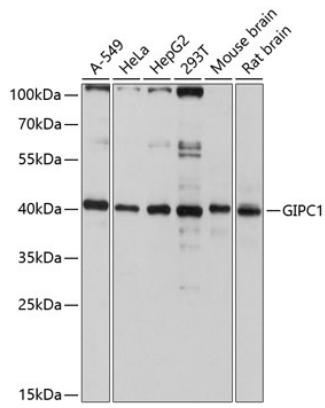
Affinity purification

Storage

Store at -20°C. Avoid freeze / thaw cycles.

Buffer: PBS with 0.01% thimerosal, 50% glycerol, pH7.3.

Validation Data



Western blot analysis of various lysates using GIPC1 Rabbit pAb (A10550) at 1:3000 dilution.
Secondary antibody: HRP Goat Anti-Rabbit IgG (H+L) (AS014) at 1:10000 dilution.
Lysates/proteins: 25µg per lane.
Blocking buffer: 3% nonfat dry milk in TBST.
Detection: ECL Basic Kit (RM00020).
Exposure time: 10s.