

# RAB13 Rabbit pAb

Catalog No.: A10571 **2 Publications**

## Basic Information

### Observed MW

23kDa

### Calculated MW

23kDa

### Category

Primary antibody

### Applications

ELISA,WB,IF/ICC

### Cross-Reactivity

Human

## Background

This gene is a member of the Rab family of small G proteins and plays a role in regulating membrane trafficking between trans-Golgi network (TGN) and recycling endosomes (RE). The encoded protein is involved in the assembly of tight junctions, which are components of the apical junctional complex (AJC) of epithelial cells. The AJC plays a role in forming a barrier between luminal contents and the underlying tissue. Additional functions associated with the protein include endocytic recycling of occludin, regulation of epithelial cell scattering, neuronal regeneration and regulation of neurite outgrowth. Alternately spliced transcript variants have been observed for this gene. A pseudogene associated with this gene is located on chromosome 12.

## Recommended Dilutions

<b>WB</b>	1:1000 - 1:2000
<b>IF/ICC</b>	1:50 - 1:200

## Immunogen Information

### Gene ID

5872

### Swiss Prot

P51153

### Immunogen

Recombinant fusion protein containing a sequence corresponding to amino acids 1-203 of human RAB13 (NP\_002861.1).

### Synonyms

GIG4; RAB13

## Contact

☎ | 400-999-6126

✉ | [cn.market@abclonal.com.cn](mailto:cn.market@abclonal.com.cn)

🌐 | [www.abclonal.com.cn](http://www.abclonal.com.cn)

## Product Information

### Source

Rabbit

### Isotype

IgG

### Purification

Affinity purification

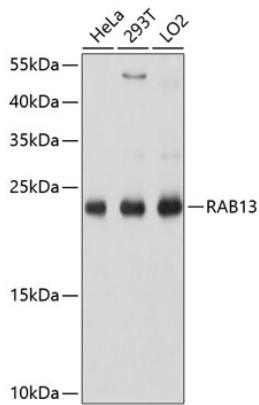
### Storage

Store at -20°C. Avoid freeze / thaw cycles.

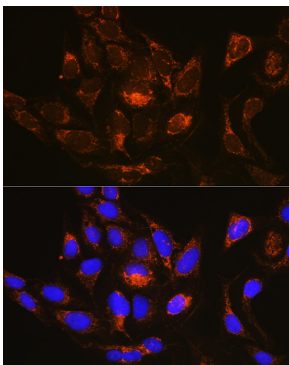
Buffer: PBS with 0.01% thimerosal, 50% glycerol, pH7.3.

## Validation Data

---



Western blot analysis of various lysates using RAB13 Rabbit pAb (A10571) at 1:1000 dilution.  
Secondary antibody: HRP Goat Anti-Rabbit IgG (H+L) (AS014) at 1:10000 dilution.  
Lysates/proteins: 25µg per lane.  
Blocking buffer: 3% nonfat dry milk in TBST.  
Detection: ECL Basic Kit (RM00020).  
Exposure time: 1s.



Immunofluorescence analysis of U-2 OS cells using RAB13 Rabbit pAb (A10571) at dilution of 1:100 (40x lens). Secondary antibody: Cy3 Goat Anti-Rabbit IgG (H+L) (AS007) at 1:500 dilution. Blue: DAPI for nuclear staining.