

SMURF2 Rabbit pAb

Catalog No.: A10592 **2 Publications**

Basic Information

Observed MW

86kDa

Calculated MW

86kDa

Category

Primary antibody

Applications

ELISA, WB

Cross-Reactivity

Human

Background

Enables SMAD binding activity; identical protein binding activity; and ubiquitin-protein transferase activity. Involved in negative regulation of transforming growth factor beta receptor signaling pathway; positive regulation of trophoblast cell migration; and ubiquitin-dependent SMAD protein catabolic process. Located in nuclear speck. Part of ubiquitin ligase complex.

Recommended Dilutions

WB 1:1000 - 1:2000

Immunogen Information

Gene ID

64750

Swiss Prot

Q9HAU4

Immunogen

Recombinant fusion protein containing a sequence corresponding to amino acids 150-250 of human SMURF2 (NP_073576.1).

Synonyms

SMURF2

Contact

 | 400-999-6126

 | cn.market@abclonal.com.cn

 | www.abclonal.com.cn

Product Information

Source

Rabbit

Isotype

IgG

Purification

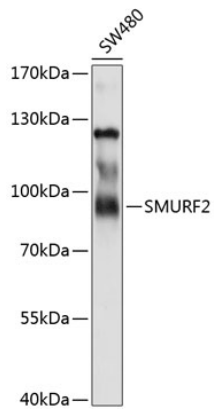
Affinity purification

Storage

Store at -20°C. Avoid freeze / thaw cycles.

Buffer: PBS with 0.02% sodium azide, 50% glycerol, pH 7.3.

Validation Data



Western blot analysis of extracts of SW480 cells, using SMURF2 antibody (A10592) at 1:1000 dilution.
Secondary antibody: HRP Goat Anti-Rabbit IgG (H+L) (AS014) at 1:10000 dilution.
Lysates/proteins: 25µg per lane.
Blocking buffer: 3% nonfat dry milk in TBST.
Detection: ECL Basic Kit (RM00020).
Exposure time: 10s.