

GPHA2 Rabbit pAb

Catalog No.: A10601

Basic Information

Observed MW

14kDa

Calculated MW

14kDa

Category

Primary antibody

Applications

ELISA, WB

Cross-Reactivity

Rat

Background

GPHA2 is a cystine knot-forming polypeptide and a subunit of the dimeric glycoprotein hormone family (Hsu et al., 2002 [PubMed 12089349]).

Recommended Dilutions

WB 1:500 - 1:1000

Immunogen Information

Gene ID

170589

Swiss Prot

Q96T91

Immunogen

Recombinant fusion protein containing a sequence corresponding to amino acids 24-129 of human GPHA2 (NP_570125.1).

Synonyms

A2; GPA2; ZSIG51; GPHA2

Contact

☎ | 400-999-6126

✉ | cn.market@abclonal.com.cn

🌐 | www.abclonal.com.cn

Product Information

Source

Rabbit

Isotype

IgG

Purification

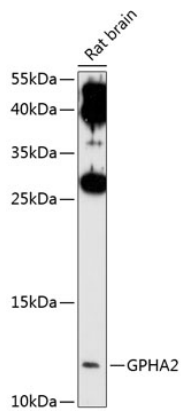
Affinity purification

Storage

Store at -20°C. Avoid freeze / thaw cycles.

Buffer: PBS with 0.01% thimerosal, 50% glycerol, pH7.3.

Validation Data



Western blot analysis of lysates from rat brain, using GPHA2 Rabbit pAb (A10601) at 1:1000 dilution.
Secondary antibody: HRP Goat Anti-Rabbit IgG (H+L) (AS014) at 1:10000 dilution.
Lysates/proteins: 25µg per lane.
Blocking buffer: 3% nonfat dry milk in TBST.
Detection: ECL Enhanced Kit (RM00021).
Exposure time: 30s.