

# ERK1 / ERK2 Mouse mAb

Catalog No.: A10613 **30 Publications**

## Basic Information

### Observed MW

42kDa/44kDa

### Calculated MW

36kDa/41kDa/38kDa/40kDa/43kDa

### Category

Primary antibody

### Applications

WB,ELISA

### Cross-Reactivity

Human,Mouse, Rat

### CloneNo number

AMC0488

## Background

MAP kinases, also known as extracellular signal-regulated kinases (ERKs), act as an integration point for multiple biochemical signals, and are involved in a wide variety of cellular processes such as proliferation, differentiation, transcription regulation and development. The activation of this kinase requires its phosphorylation by upstream kinases. Upon activation, this kinase translocates to the nucleus of the stimulated cells, where it phosphorylates nuclear targets.

## Recommended Dilutions

**WB** 1:500 - 1:2000

**ELISA** Recommended starting concentration is 1 µg/mL. Please optimize the concentration based on your specific assay requirements.

## Immunogen Information

### Gene ID

5594/5595

### Swiss Prot

P28482/P27361

### Immunogen

A synthetic peptide of human ERK1 / ERK2

### Synonyms

## Contact

☎ | 400-999-6126

✉ | [cn.market@abclonal.com.cn](mailto:cn.market@abclonal.com.cn)

🌐 | [www.abclonal.com.cn](http://www.abclonal.com.cn)

## Product Information

### Source

Mouse

### Isotype

IgG

### Purification

Affinity purification

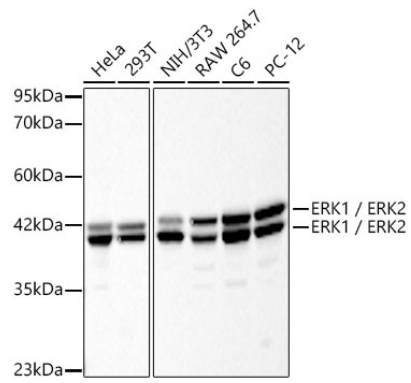
### Storage

Store at -20°C. Avoid freeze / thaw cycles.

Buffer: PBS with 0.02% sodium azide,50% glycerol,pH7.3.

## Validation Data

---



Western blot analysis of various lysates, using ERK1 / ERK2 Mouse mAb (A10613) at 1:500 dilution.  
Secondary antibody: HRP-conjugated Goat anti-Mouse IgG (H+L) (AS003) at 1:10000 dilution.  
Lysates/proteins: 25µg per lane.  
Blocking buffer: 3% nonfat dry milk in TBST.  
Detection: ECL Basic Kit (RM00020).  
Exposure time: 20s.