

Calcineurin A Rabbit pAb

Catalog No.: A1063 **6 Publications**

Basic Information

Observed MW

57kDa

Calculated MW

59kDa

Category

Primary antibody

Applications

ELISA, WB, IF/ICC

Cross-Reactivity

Human, Mouse

Background

Enables several functions, including ATPase binding activity; calmodulin binding activity; and calmodulin-dependent protein phosphatase activity. Involved in several processes, including calcineurin-NFAT signaling cascade; peptidyl-serine dephosphorylation; and response to calcium ion. Located in several cellular components, including cytosol; dendritic spine; and nucleoplasm. Part of calcineurin complex. Colocalizes with cytoplasmic side of plasma membrane. Implicated in developmental and epileptic encephalopathy 91. Biomarker of focal segmental glomerulosclerosis and schizophrenia.

Recommended Dilutions

WB	1:500 - 1:2000
IF/ICC	1:50 - 1:200

Immunogen Information

Gene ID

5530

Swiss Prot

Q08209

Immunogen

Recombinant fusion protein containing a sequence corresponding to amino acids 1-511 of human Calcineurin A (NP_001124163.1).

Synonyms

CALN; CCN1; CNA1; CALNA; DEE91; IECEE; PPP2B; ACCIID; CALNA1; IECEE1; Calcineurin A

Contact

	400-999-6126
	cn.market@abclonal.com.cn
	www.abclonal.com.cn

Product Information

Source

Rabbit

Isotype

IgG

Purification

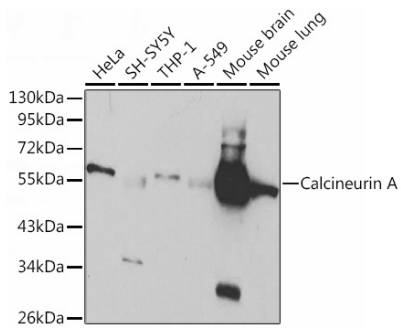
Affinity purification

Storage

Store at -20°C. Avoid freeze / thaw cycles.

Buffer: PBS with 0.02% sodium azide, 50% glycerol, pH7.3.

Validation Data

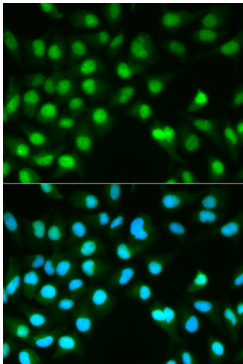


Western blot analysis of extracts of various cell lines, using Calcineurin A antibody (A1063) at 1:1000 dilution.

Secondary antibody: HRP Goat Anti-Rabbit IgG (H+L) (AS014) at 1:10000 dilution.

Lysates/proteins: 25µg per lane.

Blocking buffer: 3% nonfat dry milk in TBST.



Immunofluorescence analysis of HeLa cells using Calcineurin A antibody (A1063). Blue: DAPI for nuclear staining.