

SPC25 Rabbit pAb

Catalog No.: A10653

Basic Information

Observed MW

26kDa

Calculated MW

26kDa

Category

Primary antibody

Applications

ELISA, WB

Cross-Reactivity

Human

Background

This gene encodes a protein that may be involved in kinetochore-microtubule interaction and spindle checkpoint activity.

Recommended Dilutions

WB 1:500 - 1:1000

Immunogen Information

Gene ID

57405

Swiss Prot

Q9HBM1

Immunogen

Recombinant fusion protein containing a sequence corresponding to amino acids 120-224 of human SPC25 (NP_065726.1).

Synonyms

AD024; SPBC25; hSpc25; SPC25

Contact

☎ | 400-999-6126

✉ | cn.market@abclonal.com.cn

🌐 | www.abclonal.com.cn

Product Information

Source

Rabbit

Isotype

IgG

Purification

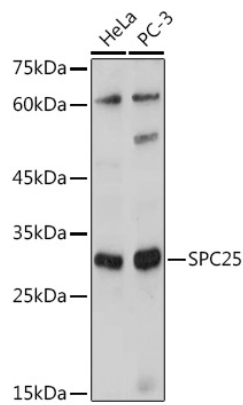
Affinity purification

Storage

Store at -20°C. Avoid freeze / thaw cycles.

Buffer: PBS with 0.05% proclin300, 50% glycerol, pH7.3.

Validation Data



Western blot analysis of extracts of various cell lines, using SPC25 antibody (A10653) at 1:1000 dilution.
Secondary antibody: HRP Goat Anti-Rabbit IgG (H+L) (AS014) at 1:10000 dilution.
Lysates/proteins: 25µg per lane.
Blocking buffer: 3% nonfat dry milk in TBST.
Detection: ECL Basic Kit (RM00020).
Exposure time: 180s.