

ELAVL4 Rabbit pAb

Catalog No.: A10655

1 Publications

Basic Information

Observed MW

42kDa

Calculated MW

42kDa

Category

Primary antibody

Applications

WB, IHC-P, IF/ICC, ELISA

Cross-Reactivity

Mouse, Rat

Background

Enables mRNA 3'-UTR AU-rich region binding activity; poly(A) binding activity; and pre-mRNA intronic pyrimidine-rich binding activity. Involved in 3'-UTR-mediated mRNA stabilization; RNA processing; and positive regulation of 3'-UTR-mediated mRNA stabilization. Predicted to be located in axon; cytoplasm; and dendrite. Predicted to be part of polysomal ribosome. Predicted to be active in glutamatergic synapse.

Recommended Dilutions

WB 1:500 - 1:2000

IHC-P 1:50 - 1:200

IF/ICC 1:50 - 1:200

ELISA Recommended starting concentration is 1 µg/mL. Please optimize the concentration based on your specific assay requirements.

Immunogen Information

Gene ID

1996

Swiss Prot

P26378

Immunogen

A synthetic peptide corresponding to a sequence within amino acids 1-100 of human ELAVL4 (NP_068771.2).

Synonyms

HUD; PNEM; ELAVL4

Contact

☎ | 400-999-6126

✉ | cn.market@abclonal.com.cn

🌐 | www.abclonal.com.cn

Product Information

Source

Rabbit

Isotype

IgG

Purification

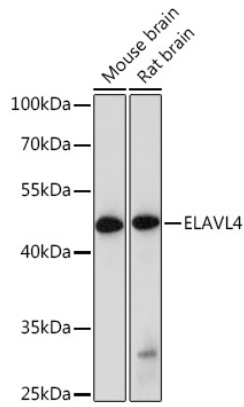
Affinity purification

Storage

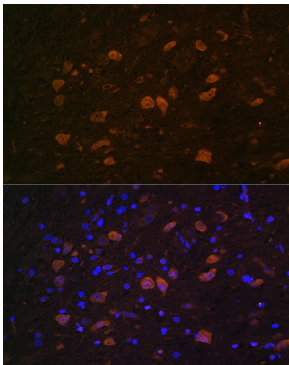
Store at -20°C. Avoid freeze / thaw cycles.

Buffer: PBS with 0.09% Sodium azide, 50% glycerol, pH7.3.

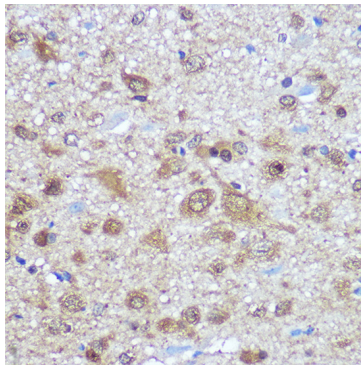
Validation Data



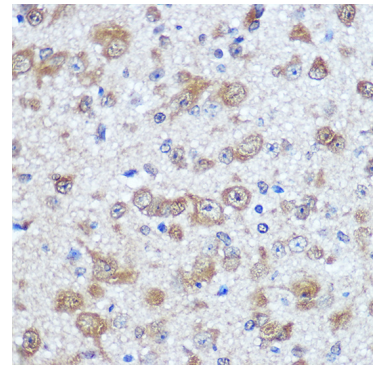
Western blot analysis of various lysates using ELAVL4 Rabbit pAb (A10655) at 1:1000 dilution. Secondary antibody: HRP-conjugated Goat anti-Rabbit IgG (H+L) (AS014) at 1:10000 dilution. Lysates/proteins: 25µg per lane. Blocking buffer: 3% nonfat dry milk in TBST. Detection: ECL Basic Kit (RM00020). Exposure time: 90s.



Immunofluorescence analysis of paraffin-embedded Rat brain using ELAVL4 Rabbit pAb (A10655) at dilution of 1:100. Secondary antibody: Cy3-conjugated Goat anti-Rabbit IgG (H+L) (AS007) at 1:500 dilution. Blue: DAPI for nuclear staining.



Immunohistochemistry analysis of paraffin-embedded Rat brain using ELAVL4 Rabbit pAb (A10655) at dilution of 1:100 (40x lens). Microwave antigen retrieval performed with 0.01M PBS Buffer (pH 7.2) prior to IHC staining.



Immunohistochemistry analysis of paraffin-embedded Mouse brain using ELAVL4 Rabbit pAb (A10655) at dilution of 1:100 (40x lens). Microwave antigen retrieval performed with 0.01M PBS Buffer (pH 7.2) prior to IHC staining.