

CSRP1 Rabbit pAb

Catalog No.: A1071

Basic Information

Observed MW

21kDa

Calculated MW

21kDa

Category

Primary antibody

Applications

WB,IP,ELISA,RIP

Cross-Reactivity

Human, Mouse

Background

This gene encodes a member of the cysteine-rich protein (CSRP) family. This gene family includes a group of LIM domain proteins, which may be involved in regulatory processes important for development and cellular differentiation. The LIM/double zinc-finger motif found in this gene product occurs in proteins with critical functions in gene regulation, cell growth, and somatic differentiation. Alternatively spliced transcript variants have been described.

Recommended Dilutions

WB 1:500 - 1:2000

IP 0.5µg-4µg antibody for
200µg-400µg extracts of
whole cells

ELISA Recommended starting
concentration is 1 µg/mL.
Please optimize the
concentration based on
your specific assay
requirements.

RIP 1:20 - 1:50

Contact

☎ | 400-999-6126

✉ | cn.market@abclonal.com.cn

🌐 | www.abclonal.com.cn

Immunogen Information

Gene ID

1465

Swiss Prot

P21291

Immunogen

Recombinant fusion protein containing a sequence corresponding to amino acids 1-193 of human CSRP1 (NP_004069.1).

Synonyms

CRP; CRP1; CSRP; CYRP; D1S181E; HEL-141; HEL-S-286; CSRP1

Product Information

Source

Rabbit

Isotype

IgG

Purification

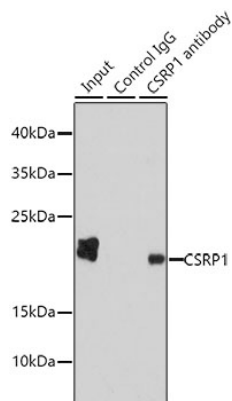
Affinity purification

Storage

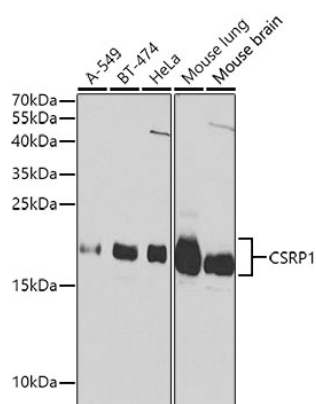
Store at -20°C. Avoid freeze / thaw cycles.

Buffer: PBS with 0.02% sodium azide,50% glycerol,pH7.3.

Validation Data



Immunoprecipitation analysis of 200 μ g extracts of HepG2 cells using 1 μ g CSRP1 antibody (A1071). Western blot was performed from the immunoprecipitate using CSRP1 antibody (A1071) at a dilution of 1:1000.



Western blot analysis of various lysates using CSRP1 Rabbit pAb (A1071) at 1:1000 dilution. Secondary antibody: HRP-conjugated Goat anti-Rabbit IgG (H+L) (AS014) at 1:10000 dilution. Lysates/proteins: 25 μ g per lane. Blocking buffer: 3% nonfat dry milk in TBST. Detection: ECL Basic Kit (RM00020).