

slc25a43 Rabbit pAb

Catalog No.: A10726 **1 Publications**

Basic Information

Observed MW

38kDa

Calculated MW

38kDa

Category

Primary antibody

Applications

ELISA, WB

Cross-Reactivity

Human

Background

This gene encodes a member of the mitochondrial carrier family of proteins.

Recommended Dilutions

WB 1:500 - 1:1000

Immunogen Information

Gene ID

203427

Swiss Prot

Q8WUT9

Immunogen

A synthetic peptide corresponding to a sequence within amino acids 1-100 of human slc25a43 (NP_660348.2).

Synonyms

SLC25A43; slc25a43

Contact

☎ | 400-999-6126

✉ | cn.market@abclonal.com.cn

🌐 | www.abclonal.com.cn

Product Information

Source

Rabbit

Isotype

IgG

Purification

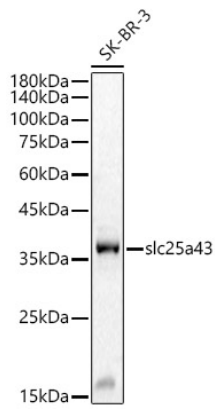
Affinity purification

Storage

Store at -20°C. Avoid freeze / thaw cycles.

Buffer: PBS with 0.05% proclin300, 50% glycerol, pH7.3.

Validation Data



Western blot analysis of SK-BR-3, using slc25a43 antibody (A10726) at 1:1000 dilution.
Secondary antibody: HRP Goat Anti-Rabbit IgG (H+L) (AS014) at 1:10000 dilution.
Lysates/proteins: 25µg per lane.
Blocking buffer: 3% nonfat dry milk in TBST.
Detection: ECL Basic Kit (RM00020).
Exposure time: 10s.