

KANSL1 Rabbit pAb

Catalog No.: A10755 **1 Publications**

Basic Information

Observed MW

121kDa

Calculated MW

121kDa

Category

Primary antibody

Applications

ELISA, WB

Cross-Reactivity

Human

Background

This gene encodes a nuclear protein that is a subunit of two protein complexes involved with histone acetylation, the MLL1 complex and the NSL1 complex. The encoded protein has been implicated in a variety of cellular processes including enhancer regulation, cell proliferation, and mitosis. Mutations in this gene are associated with Koolen-de Vries Syndrome.

Recommended Dilutions

WB 1:500 - 1:2000

Immunogen Information

Gene ID

284058

Swiss Prot

Q7Z3B3

Immunogen

Recombinant fusion protein containing a sequence corresponding to amino acids 806-1105 of human KANSL1 (NP_056258.1).

Synonyms

KDVS; NSL1; MSL1v1; CENP-36; hMSL1v1; KIAA1267; DEL17Q21.31; C17DELq21.31; KANSL1

Contact

 | 400-999-6126

 | cn.market@abclonal.com.cn

 | www.abclonal.com.cn

Product Information

Source

Rabbit

Isotype

IgG

Purification

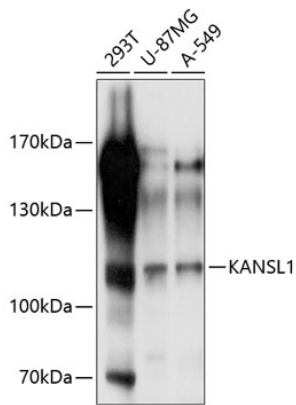
Affinity purification

Storage

Store at -20°C. Avoid freeze / thaw cycles.

Buffer: PBS with 0.01% thimerosal, 50% glycerol, pH7.3.

Validation Data



Western blot analysis of various lysates using KANSL1 Rabbit pAb (A10755) at 1:1000 dilution.
Secondary antibody: HRP Goat Anti-Rabbit IgG (H+L) (AS014) at 1:10000 dilution.
Lysates/proteins: 25µg per lane.
Blocking buffer: 3% nonfat dry milk in TBST.
Detection: ECL Basic Kit (RM00020).
Exposure time: 10s.