

Calmodulin 1/2/3 Rabbit mAb

Catalog No.: A10769 **Recombinant** **1 Publications**

Basic Information

Observed MW

17kDa

Calculated MW

16kDa

Category

Primary antibody

Applications

ELISA, WB, IHC-P, IF/ICC, IP

Cross-Reactivity

Human, Mouse, Rat

Background

This gene encodes one of three calmodulin proteins which are members of the EF-hand calcium-binding protein family. Calcium-induced activation of calmodulin regulates and modulates the function of cardiac ion channels. Two pseudogenes have been identified on chromosome 7 and X. Multiple transcript variants encoding different isoforms have been found for this gene. A missense mutation in the CALM1 gene has been associated with ventricular tachycardia.

Recommended Dilutions

WB	1:500 - 1:2000
IHC-P	1:50 - 1:200
IF/ICC	1:50 - 1:200
IP	1:20 - 1:50

Immunogen Information

Gene ID

801

Swiss Prot

P62158

Immunogen

Recombinant protein of human Calmodulin 1/2/3

Synonyms

caM; CAM2; CAM3; CAMB; CAMC; CAMI; PHKD; CPVT4; DD132; LQT14; PHKD1; CALML2; CAMIII; Calmodulin 1/2/3

Contact

☎ | 400-999-6126

✉ | cn.market@abclonal.com.cn

🌐 | www.abclonal.com.cn

Product Information

Source

Rabbit

Isotype

IgG

Purification

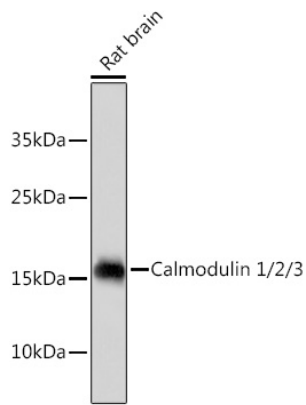
Affinity purification

Storage

Store at -20°C. Avoid freeze / thaw cycles.

Buffer: PBS with 0.02% sodium azide, 50% glycerol, pH7.3.

Validation Data



Western blot analysis of lysates from rat brain, using Calmodulin 1/2/3 Rabbit mAb (A10769).
Secondary antibody: HRP Goat Anti-Rabbit IgG (H+L) (AS014) at 1:10000 dilution.
Lysates/proteins: 25µg per lane.
Blocking buffer: 3% nonfat dry milk in TBST.