

# MYT1 Rabbit pAb

Catalog No.: A10824 **2 Publications**

## Basic Information

### Observed MW

122kDa

### Calculated MW

122kDa

### Category

Primary antibody

### Applications

ELISA, WB

### Cross-Reactivity

Human, Mouse, Rat

## Background

The protein encoded by this gene is a member of a family of neural specific, zinc finger-containing DNA-binding proteins. The protein binds to the promoter regions of proteolipid proteins of the central nervous system and plays a role in the developing nervous system.

## Recommended Dilutions

WB 1:500 - 1:2000

## Immunogen Information

### Gene ID

4661

### Swiss Prot

Q01538

### Immunogen

Recombinant fusion protein containing a sequence corresponding to amino acids 650-820 of human MYT1 (NP\_004526.1).

### Synonyms

MTF1; MYTI; NZF2; PLPB1; ZC2H2C1; ZC2HC4A; C20orf36; MYT1

## Contact

 | 400-999-6126

 | [cn.market@abclonal.com.cn](mailto:cn.market@abclonal.com.cn)

 | [www.abclonal.com.cn](http://www.abclonal.com.cn)

## Product Information

### Source

Rabbit

### Isotype

IgG

### Purification

Affinity purification

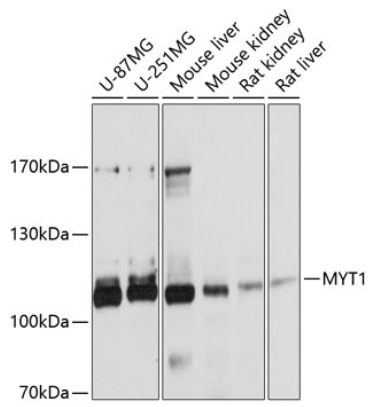
### Storage

Store at -20°C. Avoid freeze / thaw cycles.

Buffer: PBS with 0.01% thimerosal, 50% glycerol, pH7.3.

## Validation Data

---



Western blot analysis of various lysates using MYT1 Rabbit pAb (A10824) at 1:1000 dilution.  
Secondary antibody: HRP Goat Anti-Rabbit IgG (H+L) (AS014) at 1:10000 dilution.  
Lysates/proteins: 25µg per lane.  
Blocking buffer: 3% nonfat dry milk in TBST.  
Detection: ECL Basic Kit (RM00020).  
Exposure time: 5s.