

PSMD10 Rabbit pAb

Catalog No.: A10890 **1 Publications**

Basic Information

Observed MW

24kDa

Calculated MW

24kDa

Category

Primary antibody

Applications

WB, IHC-P

Cross-Reactivity

Human

Background

This gene encodes a subunit of the PA700/19S complex, which is the regulatory component of the 26S proteasome. The 26S proteasome complex is required for ubiquitin-dependent protein degradation. This protein is a non-ATPase subunit that may be involved in protein-protein interactions. Aberrant expression of this gene may play a role in tumorigenesis. Two transcripts encoding different isoforms have been described. Pseudogenes have been identified on chromosomes 3 and 20.

Recommended Dilutions

WB 1:500 - 1:2000**IHC-P** 1:50 - 1:100

Immunogen Information

Gene ID

5716

Swiss Prot

O75832

Immunogen

A synthetic peptide of human PSMD10

Synonyms

p28; p28(GANK); dj889N15.2; PSMD10

Contact

 | 400-999-6126 | cn.market@abclonal.com.cn | www.abclonal.com.cn

Product Information

Source

Rabbit

Isotype

IgG

Purification

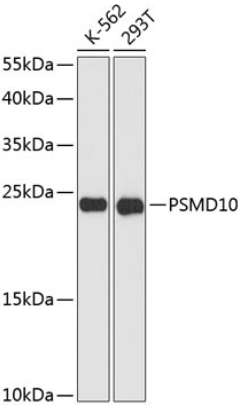
Affinity purification

Storage

Store at 4°C. Avoid freeze / thaw cycles.

Buffer: PBS with 0.02% sodium azide, pH7.3.

Validation Data



Western blot analysis of various lysates using PSMD10 Rabbit pAb (A10890) at 1:1000 dilution.
Secondary antibody: HRP Goat Anti-Rabbit IgG (H+L) (AS014) at 1:10000 dilution.
Lysates/proteins: 25µg per lane.
Blocking buffer: 3% nonfat dry milk in TBST.
Detection: ECL Basic Kit (RM00020).
Exposure time: 90S.