

# ZWINT Rabbit pAb

Catalog No.: A10914 **1 Publications**

## Basic Information

**Observed MW**

35kDa

**Calculated MW**

31kDa

**Category**

Primary antibody

**Applications**

WB,FC

**Cross-Reactivity**

Human, Mouse

## Background

This gene encodes a protein that is clearly involved in kinetochore function although an exact role is not known. It interacts with ZW10, another kinetochore protein, possibly regulating the association between ZW10 and kinetochores. The encoded protein localizes to prophase kinetochores before ZW10 does and it remains detectable on the kinetochore until late anaphase. It has a uniform distribution in the cytoplasm of interphase cells. Alternatively spliced transcript variants encoding different isoforms have been found for this gene.

## Recommended Dilutions

<b>WB</b>	1:500 - 1:1000
<b>FC</b>	1:20 - 1:50

## Immunogen Information

**Gene ID**

11130

**Swiss Prot**

O95229

**Immunogen**

A synthetic peptide of human ZWINT

**Synonyms**

SIP30; ZWINT1; KNTC2AP; HZwint-1; ZWINT

## Contact

 | 400-999-6126 | [cn.market@abclonal.com.cn](mailto:cn.market@abclonal.com.cn) | [www.abclonal.com.cn](http://www.abclonal.com.cn)

## Product Information

**Source**

Rabbit

**Isotype**

IgG

**Purification**

Affinity purification

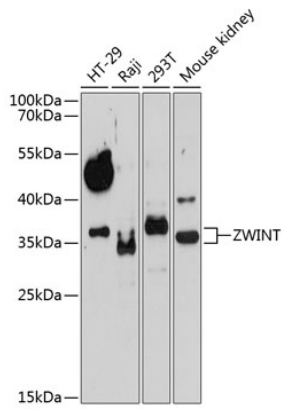
**Storage**

Store at 4°C. Avoid freeze / thaw cycles.

Buffer: PBS with 0.02% sodium azide,pH7.3.

## Validation Data

---



Western blot analysis of various lysates using ZWINT Rabbit pAb (A10914) at 1:1000 dilution.  
Secondary antibody: HRP Goat Anti-Rabbit IgG (H+L) (AS014) at 1:10000 dilution.  
Lysates/proteins: 25µg per lane.  
Blocking buffer: 3% nonfat dry milk in TBST.  
Detection: ECL Basic Kit (RM00020).  
Exposure time: 90s.