

LRP1 Rabbit mAb

Catalog No.: A10963

Recombinant

3 Publications

Basic Information

Observed MW

78kDa

Calculated MW

505kDa

Category

Primary antibody

Applications

ELISA, WB, IHC-P, IF/ICC, IP

Cross-Reactivity

Human, Mouse, Rat

Background

This gene encodes a member of the low-density lipoprotein receptor family of proteins. The encoded preproprotein is proteolytically processed by furin to generate 515 kDa and 85 kDa subunits that form the mature receptor (PMID: 8546712). This receptor is involved in several cellular processes, including intracellular signaling, lipid homeostasis, and clearance of apoptotic cells. In addition, the encoded protein is necessary for the alpha 2-macroglobulin-mediated clearance of secreted amyloid precursor protein and beta-amyloid, the main component of amyloid plaques found in Alzheimer patients. Expression of this gene decreases with age and has been found to be lower than controls in brain tissue from Alzheimer's disease patients.

Recommended Dilutions

WB	1:10000 - 1:20000
IHC-P	1:50 - 1:100
IF/ICC	1:50 - 1:100
IP	1:20 - 1:50

Immunogen Information

Gene ID

4035

Swiss Prot

Q07954

Immunogen

Recombinant protein of human LRP1

Synonyms

APR; KPA; LRP; A2MR; CD91; APOER; LRP1A; TGFBR5; IGFBP3R; IGFBP-3R; IGFBP3R1; LRP1

Contact

☎	400-999-6126
✉	cn.market@abclonal.com.cn
🌐	www.abclonal.com.cn

Product Information

Source

Rabbit

Isotype

IgG

Purification

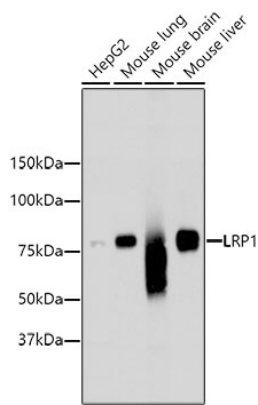
Affinity purification

Storage

Store at -20°C. Avoid freeze / thaw cycles.

Buffer: PBS with 0.02% sodium azide, 50% glycerol, pH7.3.

Validation Data



Western blot analysis of extracts of various cell lines, using LRP1 antibody (A10963).
Secondary antibody: HRP Goat Anti-Rabbit IgG (H+L) (AS014) at 1:10000 dilution.
Lysates/proteins: 25µg per lane.
Blocking buffer: 3% nonfat dry milk in TBST.