

ARHGEF7 Rabbit pAb

Catalog No.: A1108

1 Publications

Basic Information

Observed MW

86kDa

Calculated MW

90kDa

Category

Primary antibody

Applications

ELISA, WB

Cross-Reactivity

Human, Mouse

Background

This gene encodes a protein that belongs to a family of cytoplasmic proteins that activate the Ras-like family of Rho proteins by exchanging bound GDP for GTP. It forms a complex with the small GTP binding protein Rac1 and recruits Rac1 to membrane ruffles and to focal adhesions. Multiple alternatively spliced transcript variants encoding different isoforms have been observed for this gene.

Recommended Dilutions

WB 1:500 - 1:2000

Immunogen Information

Gene ID

8874

Swiss Prot

Q14155

Immunogen

Recombinant fusion protein containing a sequence corresponding to amino acids 1-260 of human ARHGEF7 (NP_001106984.1).

Synonyms

P50; P85; PAK3; PIXB; COOL1; P50BP; COOL-1; P85SPR; BETA-PIX; P85COOL1; Nbla10314; ARHGEF7

Contact

☎ | 400-999-6126

✉ | cn.market@abclonal.com.cn

🌐 | www.abclonal.com.cn

Product Information

Source

Rabbit

Isotype

IgG

Purification

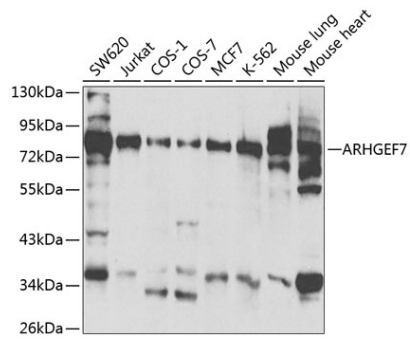
Affinity purification

Storage

Store at -20°C. Avoid freeze / thaw cycles.

Buffer: PBS with 0.02% sodium azide, 50% glycerol, pH 7.3.

Validation Data



Western blot analysis of extracts of various cell lines, using ARHGEF7 antibody (A1108) at 1:500 dilution.
Secondary antibody: HRP Goat Anti-Rabbit IgG (H+L) (AS014) at 1:10000 dilution.
Lysates/proteins: 25µg per lane.
Blocking buffer: 3% nonfat dry milk in TBST.