

MMP11 Rabbit mAb

Catalog No.: A11088

Recombinant

1 Publications

Basic Information

Observed MW

55kDa

Calculated MW

55kDa

Category

Primary antibody

Applications

WB,ELISA

Cross-Reactivity

Human, Mouse, Rat

CloneNo number

ARC0523

Background

Proteins of the matrix metalloproteinase (MMP) family are involved in the breakdown of extracellular matrix in normal physiological processes, such as embryonic development, reproduction, and tissue remodeling, as well as in disease processes, such as arthritis and metastasis. Most MMP's are secreted as inactive proproteins which are activated when cleaved by extracellular proteinases. However, the enzyme encoded by this gene is activated intracellularly by furin within the constitutive secretory pathway. Also in contrast to other MMP's, this enzyme cleaves alpha 1-proteinase inhibitor but weakly degrades structural proteins of the extracellular matrix.

Recommended Dilutions

WB 1:1000 - 1:4000

ELISA Recommended starting concentration is 1 µg/mL. Please optimize the concentration based on your specific assay requirements.

Immunogen Information

Gene ID

4320

Swiss Prot

P24347

Immunogen

A synthetic peptide corresponding to a sequence within amino acids 389-488 of human MMP11 (P24347).

Synonyms

ST3; SL-3; STMY3; MMP11

Contact

☎ | 400-999-6126

✉ | cn.market@abclonal.com.cn

🌐 | www.abclonal.com.cn

Product Information

Source

Rabbit

Isotype

IgG

Purification

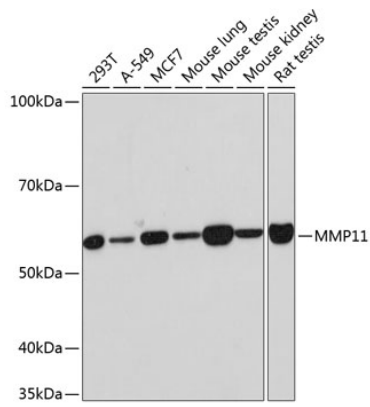
Affinity purification

Storage

Store at -20°C. Avoid freeze / thaw cycles.

Buffer: PBS with 0.02% sodium azide,0.05% BSA,50% glycerol,pH7.3.

Validation Data



Western blot analysis of various lysates using MMP11 Rabbit mAb (A11088) at 1:1000 dilution.
Secondary antibody: HRP-conjugated Goat anti-Rabbit IgG (H+L) (AS014) at 1:10000 dilution.
Lysates/proteins: 25µg per lane.
Blocking buffer: 3% nonfat dry milk in TBST.
Detection: ECL Basic Kit (RM00020).
Exposure time: 30s.