

Heme Oxygenase 1 (HO-1/HMOX1) Rabbit pAb

Catalog No.: A11102 **2 Publications**

Basic Information

Observed MW

33kDa

Calculated MW

33kDa

Category

Primary antibody

Applications

ELISA, WB, IHC-P

Cross-Reactivity

Human, Mouse, Rat

Background

Heme oxygenase, an essential enzyme in heme catabolism, cleaves heme to form biliverdin, which is subsequently converted to bilirubin by biliverdin reductase, and carbon monoxide, a putative neurotransmitter. Heme oxygenase activity is induced by its substrate heme and by various nonheme substances. Heme oxygenase occurs as 2 isozymes, an inducible heme oxygenase-1 and a constitutive heme oxygenase-2. HMOX1 and HMOX2 belong to the heme oxygenase family.

Recommended Dilutions

WB 1:500 - 1:1000

IHC-P 1:50 - 1:200

Immunogen Information

Gene ID

3162

Swiss Prot

P09601

Immunogen

Recombinant fusion protein containing a sequence corresponding to amino acids 1-265 of human Heme Oxygenase 1 (HO-1/HMOX1) (NP_002124.1).

Synonyms

HO-1; HSP32; HMOX1D; bK286B10; Heme Oxygenase 1 (HO-1/HMOX1)

Contact

☎ | 400-999-6126

✉ | cn.market@abclonal.com.cn

🌐 | www.abclonal.com.cn

Product Information

Source

Rabbit

Isotype

IgG

Purification

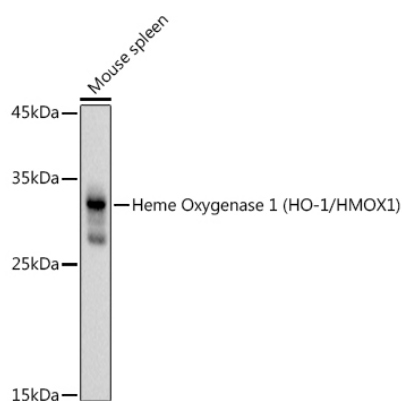
Affinity purification

Storage

Store at -20°C. Avoid freeze / thaw cycles.

Buffer: PBS with 0.05% proclin300, 50% glycerol, pH7.3.

Validation Data



Western blot analysis of lysates from Mouse spleen, using Heme Oxygenase 1 (HO-1/HMOX1) Rabbit pAb (A11102) at 1:1000 dilution.

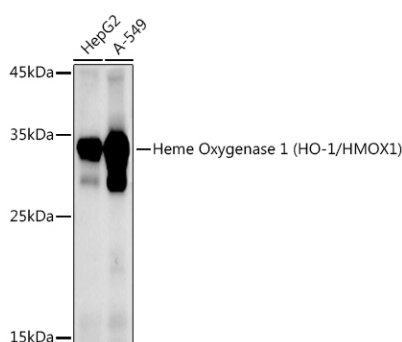
Secondary antibody: HRP Goat Anti-Rabbit IgG (H+L) (AS014) at 1:10000 dilution.

Lysates/proteins: 25µg per lane.

Blocking buffer: 3% nonfat dry milk in TBST.

Detection: ECL Basic Kit (RM00020).

Exposure time: 3s.



Western blot analysis of various lysates using Heme Oxygenase 1 (HO-1/HMOX1) Rabbit pAb (A11102) at 1:1000 dilution.

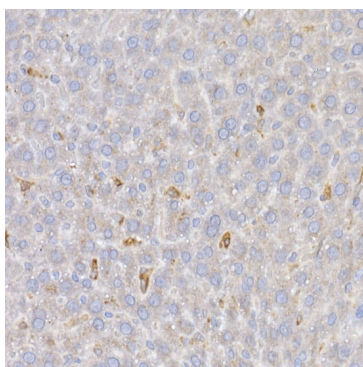
Secondary antibody: HRP Goat Anti-Rabbit IgG (H+L) (AS014) at 1:10000 dilution.

Lysates/proteins: 25µg per lane.

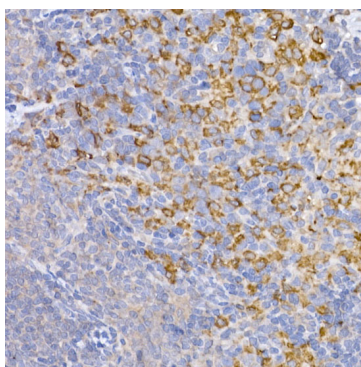
Blocking buffer: 3% nonfat dry milk in TBST.

Detection: ECL Enhanced Kit (RM00021).

Exposure time: 90s.



Immunohistochemistry analysis of Heme Oxygenase 1 (HO-1/HMOX1) in paraffin-embedded Rat liver using Heme Oxygenase 1 (HO-1/HMOX1) Rabbit pAb (A11102) at dilution of 1:50 (40x lens). Perform high pressure antigen retrieval with 10 mM citrate buffer pH 6.0 before commencing with IHC staining protocol.



Immunohistochemistry analysis of Heme Oxygenase 1 (HO-1/HMOX1) in paraffin-embedded Rat spleen using Heme Oxygenase 1 (HO-1/HMOX1) Rabbit pAb (A11102) at dilution of 1:50 (40x lens). Perform high pressure antigen retrieval with 10 mM citrate buffer pH 6.0 before commencing with IHC staining protocol.