

IRF3 Rabbit pAb

Catalog No.: A11118 **14 Publications**

Basic Information

Observed MW

47kDa

Calculated MW

47kDa

Category

Primary antibody

Applications

WB, IHC-P, IF/ICC, IP, ELISA, ChIP

Cross-Reactivity

Human, Mouse, Rat

Background

This gene encodes a member of the interferon regulatory transcription factor (IRF) family. The encoded protein is found in an inactive cytoplasmic form that upon serine/threonine phosphorylation forms a complex with CREBBP. This complex translocates to the nucleus and activates the transcription of interferons alpha and beta, as well as other interferon-induced genes. The protein plays an important role in the innate immune response against DNA and RNA viruses. Mutations in this gene are associated with Encephalopathy, acute, infection-induced, herpes-specific, 7.

Recommended Dilutions

WB	1:1000 - 1:5000
IHC-P	1:50 - 1:200
IF/ICC	1:50 - 1:200
IP	0.5µg-4µg antibody for 200µg-400µg extracts of whole cells
ELISA	Recommended starting concentration is 1 µg/mL. Please optimize the concentration based on your specific assay requirements.
ChIP	5µg antibody for 10µg-15µg of Chromatin

Immunogen Information

Gene ID

3661

Swiss Prot

Q14653

Immunogen

Recombinant fusion protein containing a sequence corresponding to amino acids 100-200 of human IRF3 (NP_001184051.1).

Synonyms

IIAE7; IRF3

Product Information

Source

Rabbit

Isotype

IgG

Purification

Affinity purification

Storage

Store at -20°C. Avoid freeze / thaw cycles.

Buffer: PBS with 0.09% Sodium azide, 50% glycerol, pH7.3.

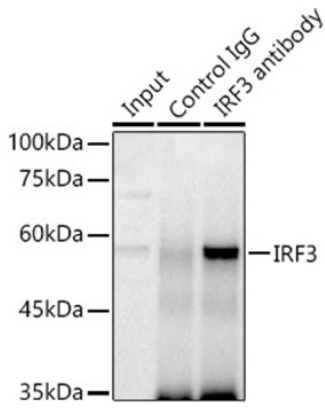
Contact

 | 400-999-6126

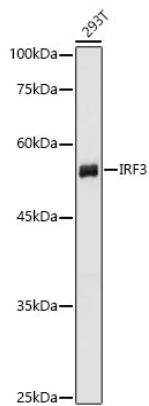
 | cn.market@abclonal.com.cn

 | www.abclonal.com.cn

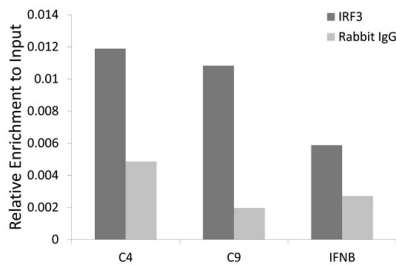
Validation Data



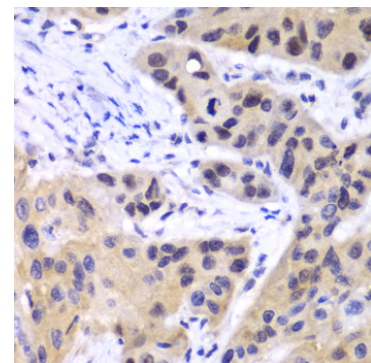
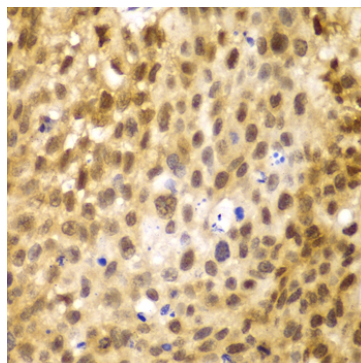
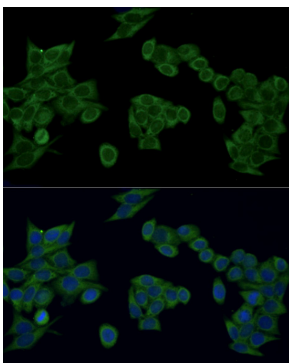
Immunoprecipitation analysis of 300 µg extracts of 293T cells using 3 µg IRF3 antibody (A11118). Western blot was performed from the immunoprecipitate using IRF3 (A11118) at a dilution of 1:1000.



Western blot analysis of lysates from 293T cells using IRF3 Rabbit pAb (A11118) at 1:1000 dilution. Secondary antibody: HRP-conjugated Goat anti-Rabbit IgG (H+L) (AS014) at 1:10000 dilution. Lysates/proteins: 25 µg per lane. Blocking buffer: 3% nonfat dry milk in TBST. Detection: ECL Basic Kit (RM00020). Exposure time: 1s.



Chromatin immunoprecipitation analysis of extracts of HCT116 cell line, using IRF3 rabbit polyclonal antibody (A11118) and rabbit IgG. The amount of immunoprecipitated DNA was checked by quantitative PCR. Histogram was constructed by the ratios of the immunoprecipitated DNA to the input.



Validation Data

Immunofluorescence analysis of HeLa cells using IRF3 Rabbit pAb (A11118) at dilution of 1:100 (40x lens). Secondary antibody: ABflo® 488-conjugated Goat Anti-Rabbit IgG (H+L) (AS073) at 1:500 dilution. Blue: DAPI for nuclear staining.

Immunohistochemistry analysis of paraffin-embedded Human lung cancer using IRF3 Rabbit pAb (A11118) at dilution of 1:100 (40x lens). Microwave antigen retrieval performed with 0.01M PBS Buffer (pH 7.2) prior to IHC staining.

Immunohistochemistry analysis of paraffin-embedded Human esophageal cancer using IRF3 Rabbit pAb (A11118) at dilution of 1:100 (40x lens). Microwave antigen retrieval performed with 0.01M PBS Buffer (pH 7.2) prior to IHC staining.